



## vRad Analytics: Teleradiology Metrics Report

Prepared exclusively for **Acme Radiology Group**

This complimentary report was prepared exclusively for your organization. It provides a year-to-date monthly rolling snapshot of the teleradiology studies vRad has read for each of your facility(s). The report includes the following facility-level key metrics:

- **Total Imaging Volumes:** review your imaging volumes by Modality and Priority.
- **Average Turnaround Times:** assess your TATs by Modality and Priority.
- **Critical Findings Information:** look over your monthly critical findings.

Your personalized report is designed to provide you with facility-specific study volumes and trending data coupled with a transparent view of our turnaround time performance.

### Questions or feedback regarding your report?

Contact your vRad Account Manager or call us at 800.737.0610. We welcome your feedback, comments and suggestions—we are continually looking for ways to enhance our service.

Thank you.



### Reminder: To Access Your Quality Assurance (QA) Data - Use Your 24x7 vRad QA Portal.

We deliver quality patient care by maintaining the highest professional standards for our radiologists - and an industry leading Quality Assurance (QA) Program. Provide direct feedback and access to your facility(s) QA data 24/7 through our secure, custom portal to:

- Submit QA requests
- Review QA submission status
- Access your facility(s) QA reports
- Set access levels for your team members

For compliance and privacy purposes, QA data is not included via email in your Teleradiology Metrics Report. To access your specific facility(s) QA data, login to our client portal at: [access.vrad.com](https://access.vrad.com).

If you would like training on how to use our QA portal and an overview of its benefits - please email our QA team at [qaadmin@vrad.com](mailto:qaadmin@vrad.com).

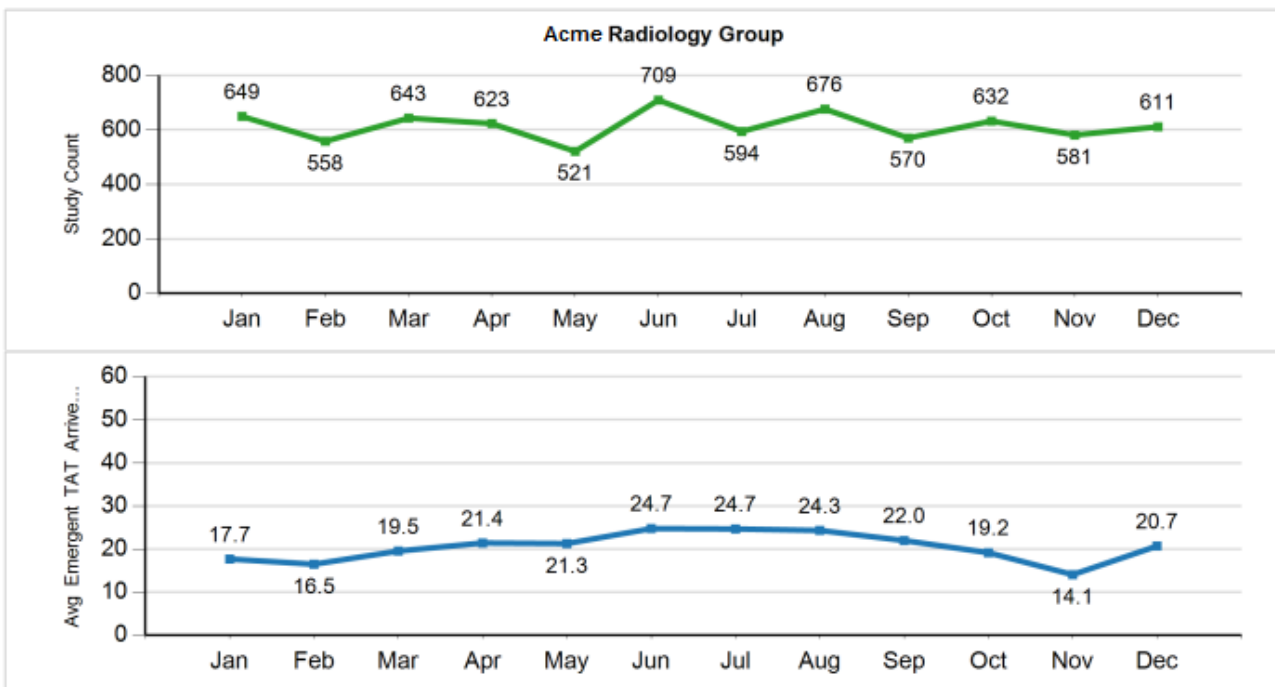


## Acme Radiology Group

### Teleradiology Activity Jan 2014 - Dec 2014

#### Your Teleradiology Metrics Report Dashboard

Your Teleradiology Metrics Report Dashboard is an executive summary of all of your facility(s) for which vRad provides teleradiology services. The information below is a snapshot of your study counts and turnaround time averages.



	Jan	Feb	Mar	Apr	May	Jun	Jul	Aug	Sep	Oct	Nov	Dec
Study Count	649	558	643	623	521	709	594	676	570	632	581	611
Avg Emergent TAT	17.7	16.5	19.5	21.4	21.3	24.7	24.7	24.3	22.0	19.2	14.1	20.7

#### Average Emergent TAT Range - Dec 2014

0-15 Min.	16-30 Min.	31-45 Min.	46-60 Min.	> 60 Min.
40.1%	39.9%	15.4%	3.9%	0.7%

#### Year-to-Date Summary



**Total Teleradiology Volume**  
7367



**Average Emergent TAT**  
20.6



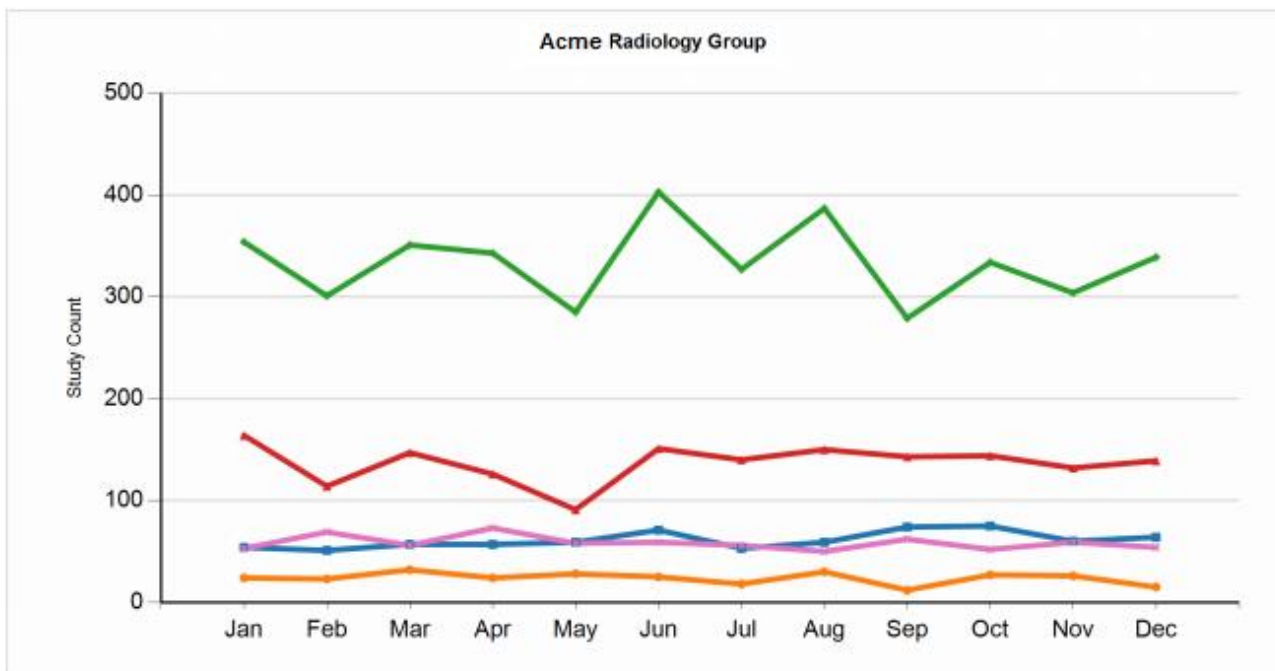


# Acme Radiology Group

## Teleradiology Activity Jan 2014 - Dec 2014

### Your Imaging Volumes

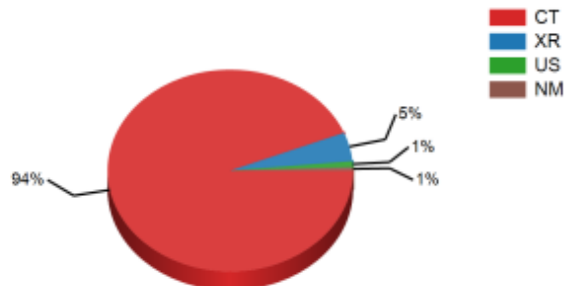
#### Total Imaging Volumes - YTD



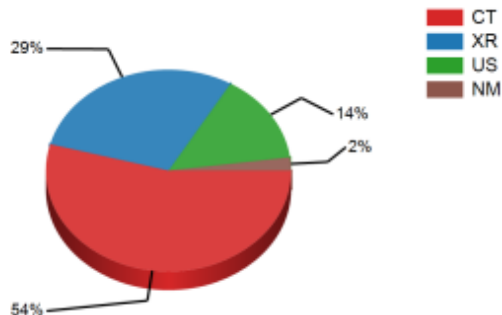
Facility Name	Jan	Feb	Mar	Apr	May	Jun	Jul	Aug	Sep	Oct	Nov	Dec	Total
Facility A	54	51	57	57	59	71	53	59	74	75	60	64	734
Facility B	24	23	32	24	28	25	18	30	12	27	26	15	284
Facility C	354	301	351	343	285	403	327	387	279	334	304	339	4007
Facility D	164	114	147	126	91	151	140	150	143	144	132	139	1641
Facility E	53	69	56	73	58	59	56	50	62	52	59	54	701
<b>Total</b>	<b>649</b>	<b>558</b>	<b>643</b>	<b>623</b>	<b>521</b>	<b>709</b>	<b>594</b>	<b>676</b>	<b>570</b>	<b>632</b>	<b>581</b>	<b>611</b>	<b>7367</b>

**Volumes by Modality - YTD**

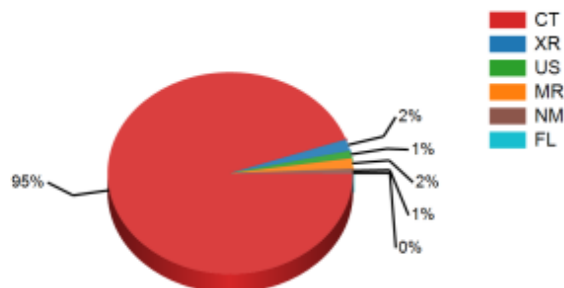
**Facility A**



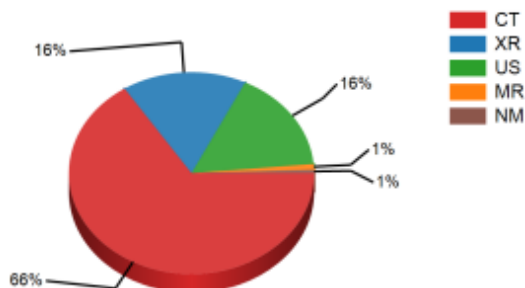
**Facility B**



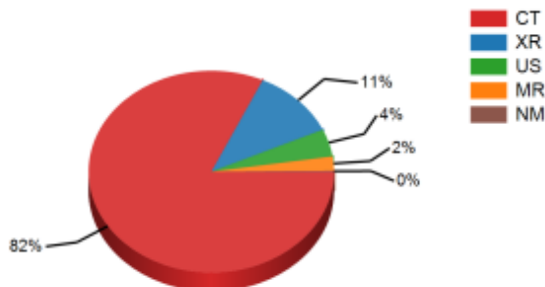
**Facility C**



**Facility D**



**Facility E**



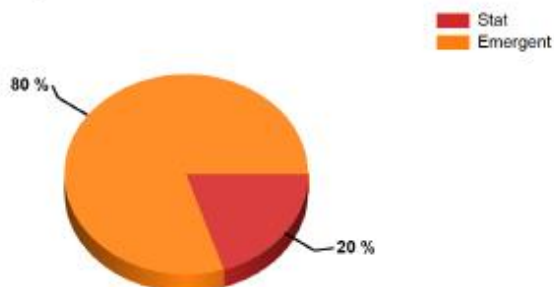


**Acme Radiology Group**  
**Teleradiology Activity Jan 2014 - Dec 2014**

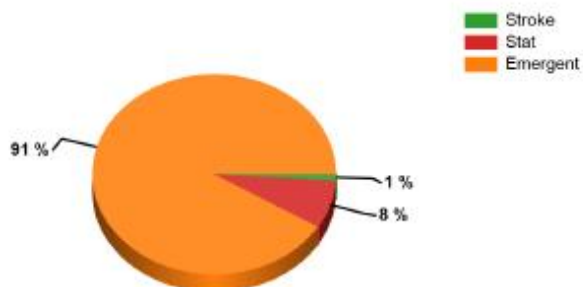
Facility Name	CT	XR	US	MR	NM	FL	Total
Facility A	689	34	7		4		734
Facility B	154	83	41		6		284
Facility C	3789	75	48	66	28	1	4007
Facility D	1080	269	268	15	9		1641
Facility E	574	79	31	16	1		701
<b>Total</b>	<b>6286</b>	<b>540</b>	<b>395</b>	<b>97</b>	<b>48</b>	<b>1</b>	<b>7367</b>

## Volumes by Priority - YTD

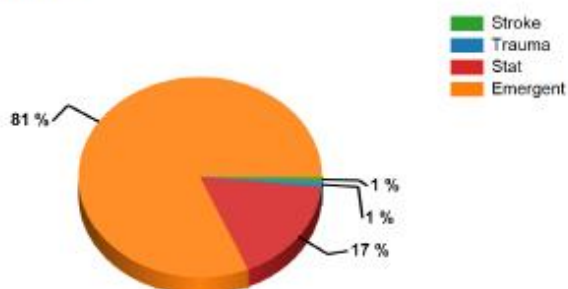
Facility A



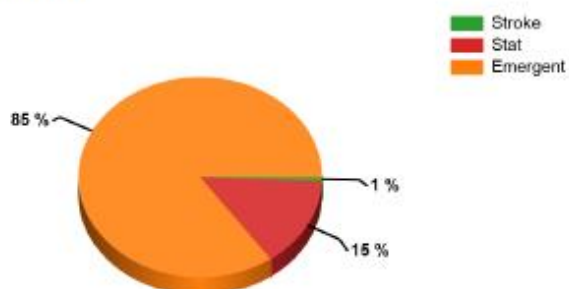
Facility B



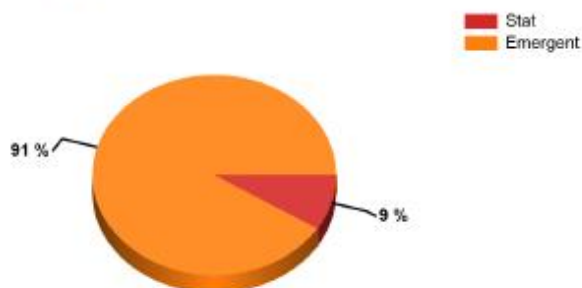
Facility C



Facility D



Facility E





**Acme Radiology Group**  
**Teleradiology Activity Jan 2014 - Dec 2014**

Facility Name	Stroke	Trauma	Stat	Emergent	Total
Facility A			147	587	734
Facility B	3		22	259	284
Facility C	33	32	681	3261	4007
Facility D	11		239	1391	1641
Facility E			63	638	701
Total	47	32	1152	6136	7367



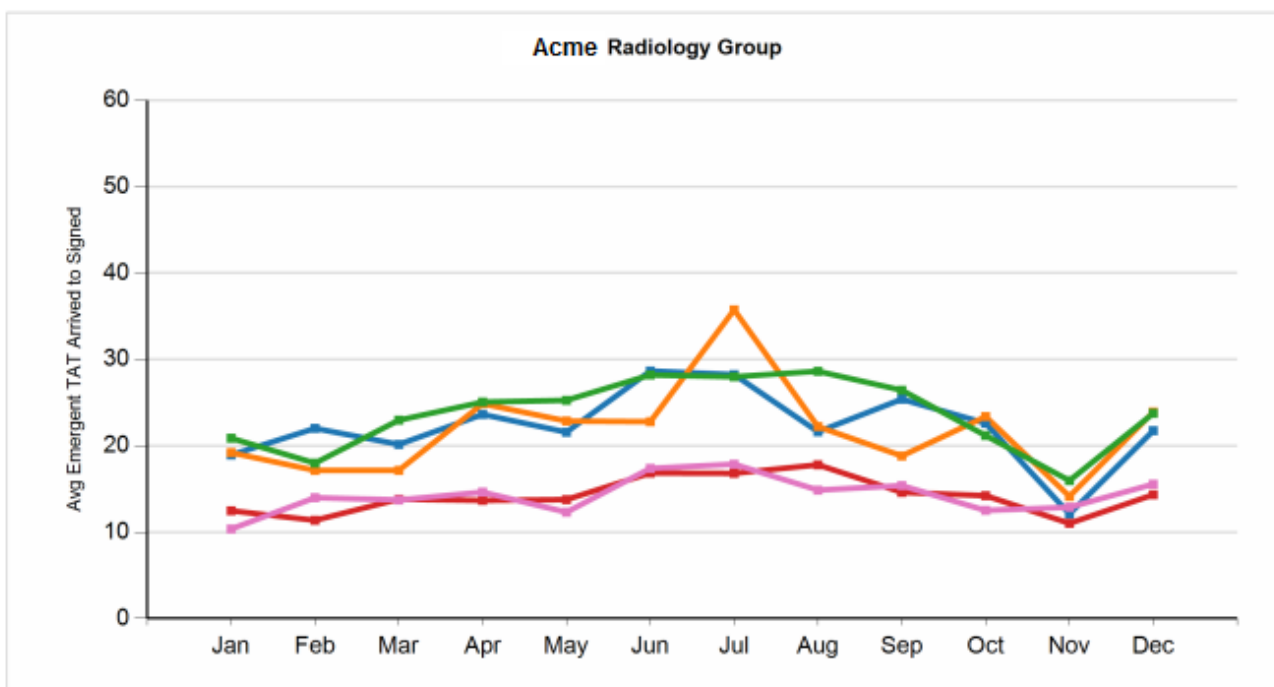
## Acme Radiology Group

### Teleradiology Activity Jan 2014 - Dec 2014

### Your Turnaround Times (TATs)

Defined as the time the order was assigned to the radiologist worklist to the time the report was signed by the radiologist, in minutes. Emergent TATs include Stroke Protocol, Trauma Protocol, Stat and Emergent priorities. Routine TATs include only the NonEmergent priority.

### Average Emergent TAT - YTD



Facility Name	Jan	Feb	Mar	Apr	May	Jun	Jul	Aug	Sep	Oct	Nov	Dec	Total
Facility A	18.9	22.0	20.2	23.6	21.6	28.7	28.2	21.6	25.4	22.6	12.1	21.8	22.4
Facility B	19.2	17.2	17.2	24.9	22.9	22.8	35.7	22.2	18.8	23.4	14.1	23.9	21.5
Facility C	20.9	18.0	23.0	25.1	25.3	28.2	28.0	28.6	26.4	21.2	16.0	23.8	23.9
Facility D	12.5	11.4	13.8	13.7	13.8	16.8	16.8	17.8	14.6	14.2	11.0	14.3	14.3
Facility E	10.4	14.0	13.7	14.6	12.3	17.4	17.9	14.9	15.4	12.5	12.9	15.6	14.3
<b>Total</b>	<b>17.7</b>	<b>16.5</b>	<b>19.5</b>	<b>21.4</b>	<b>21.3</b>	<b>24.7</b>	<b>24.7</b>	<b>24.3</b>	<b>22.0</b>	<b>19.2</b>	<b>14.1</b>	<b>20.7</b>	<b>20.6</b>





**Acme Radiology Group**  
**Teleradiology Activity Jan 2014 - Dec 2014**

**Average Emergent TAT Range - Dec 2014**

Average Emergent TAT Range is for the most recent month, Dec 2014.

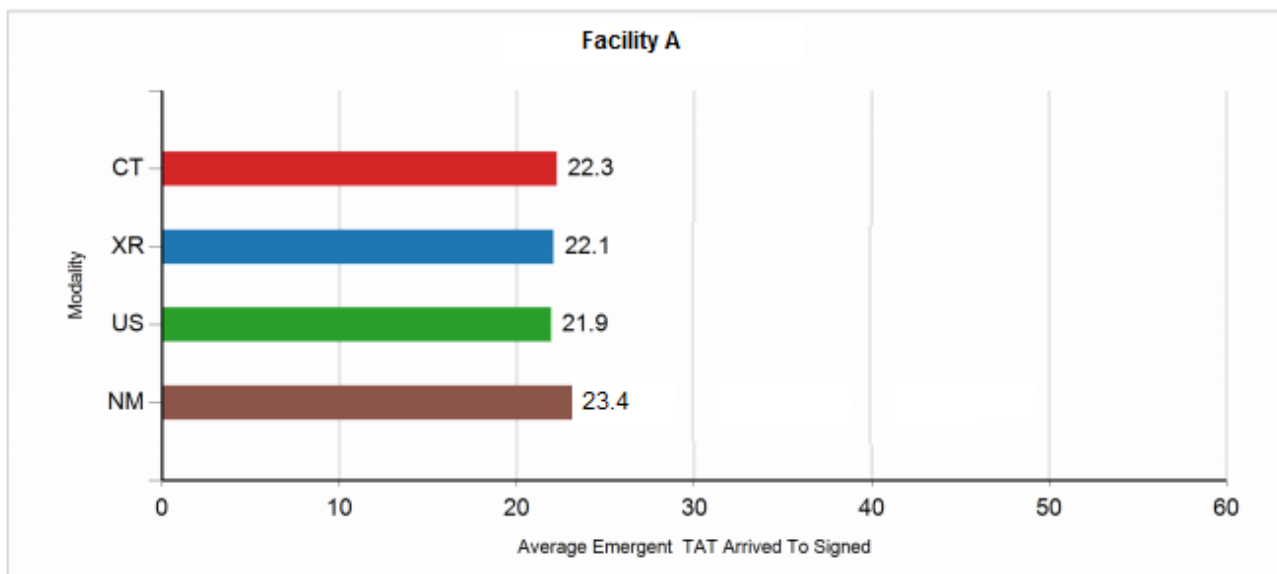
Facility Name	0-15 Min.	16-30 Min.	31-45 Min.	46-60 Min.	> 60 Min.	Total
■ Facility A	32.8%	42.2%	23.4%	0.0%	1.6%	100.0%
■ Facility B	26.7%	46.7%	20.0%	6.7%	0.0%	100.0%
■ Facility C	28.3%	47.2%	18.0%	5.6%	0.9%	100.0%
■ Facility D	66.2%	25.2%	5.8%	2.9%	0.0%	100.0%
■ Facility E	59.3%	27.8%	13.0%	0.0%	0.0%	100.0%
<b>Total</b>	<b>40.1%</b>	<b>39.9%</b>	<b>15.4%</b>	<b>3.9%</b>	<b>0.7%</b>	<b>100.0%</b>



# Acme Radiology Group

## Teleradiology Activity Jan 2014 - Dec 2014

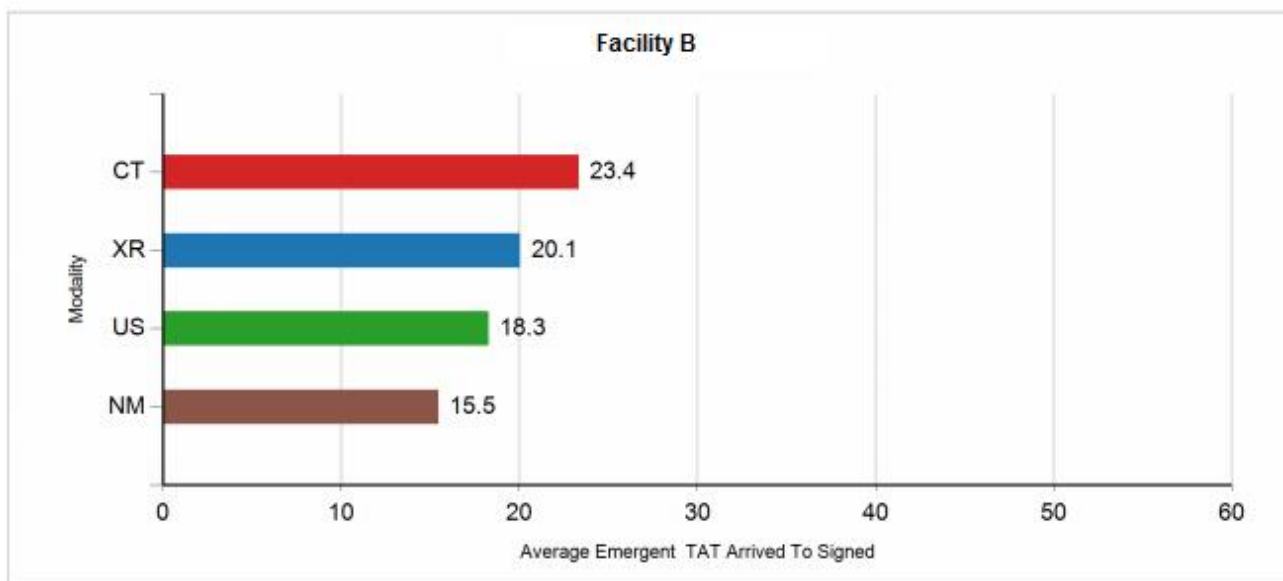
### Average Emergent TAT by Modality – YTD



Modality	Jan	Feb	Mar	Apr	May	Jun	Jul	Aug	Sep	Oct	Nov	Dec	Total
CT	19.1	21.6	20.2	24.0	20.7	29.1	28.5	21.6	24.8	22.6	12.0	22.1	22.3
XR	8.7	28.1	-	17.9	33.2	21.0	24.7	23.0	24.7	21.0	18.7	15.2	22.1
US	-	-	-	16.8	-	38.6	-	-	-	-	-	21.5	21.9
NM	-	-	-	21.7	-	-	-	-	25.1	-	-	-	23.4
Total	18.9	22.0	20.2	23.6	21.6	28.7	28.2	21.6	24.8	22.6	12.1	21.8	22.4

# Acme Radiology Group

## Teleradiology Activity Jan 2014 - Dec 2014

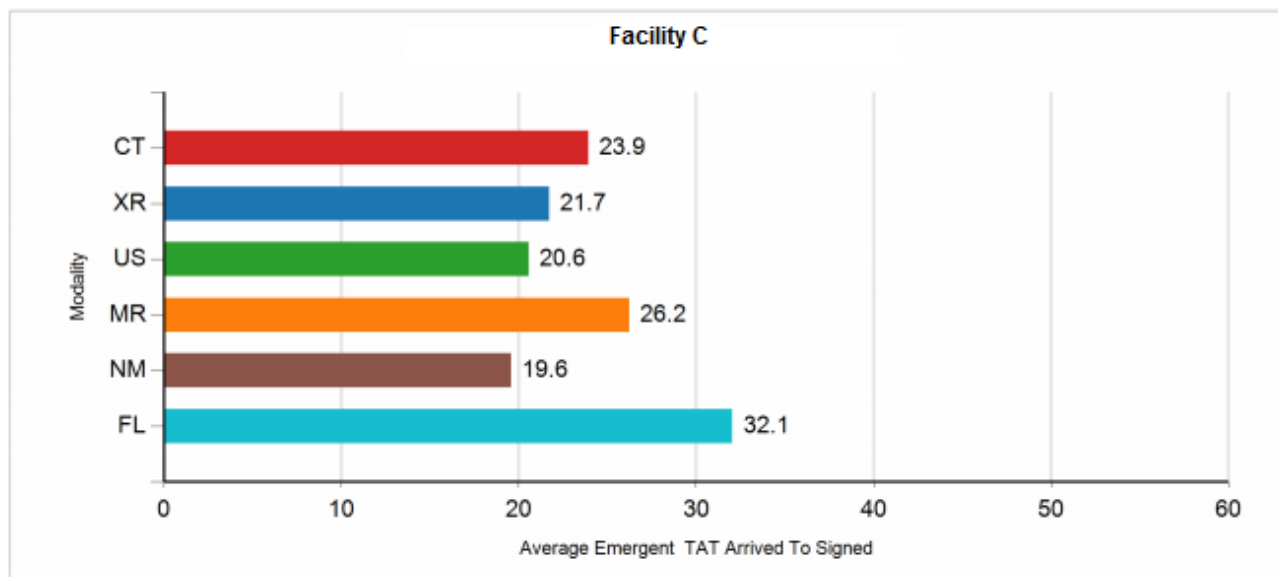


Modality	Jan	Feb	Mar	Apr	May	Jun	Jul	Aug	Sep	Oct	Nov	Dec	Total
CT	18.1	19.1	20.0	24.6	24.6	25.0	39.3	25.4	23.8	24.0	16.5	22.9	23.4
XR	25.7	17.5	12.1	25.2	19.2	14.9	26.8	20.0	18.8	23.0	17.3	21.7	20.1
US	13.2	12.7	18.0	-	35.1	18.4	26.2	20.2	17.2	22.3	6.3	30.7	18.3
NM	-	5.9	-	-	-	34.1	-	10.3	-	-	2.5	-	15.5
Total	19.2	17.2	17.2	24.9	22.9	22.8	35.7	22.2	18.8	23.4	14.1	23.9	21.5



# Acme Radiology Group

## Teleradiology Activity Jan 2014 - Dec 2014

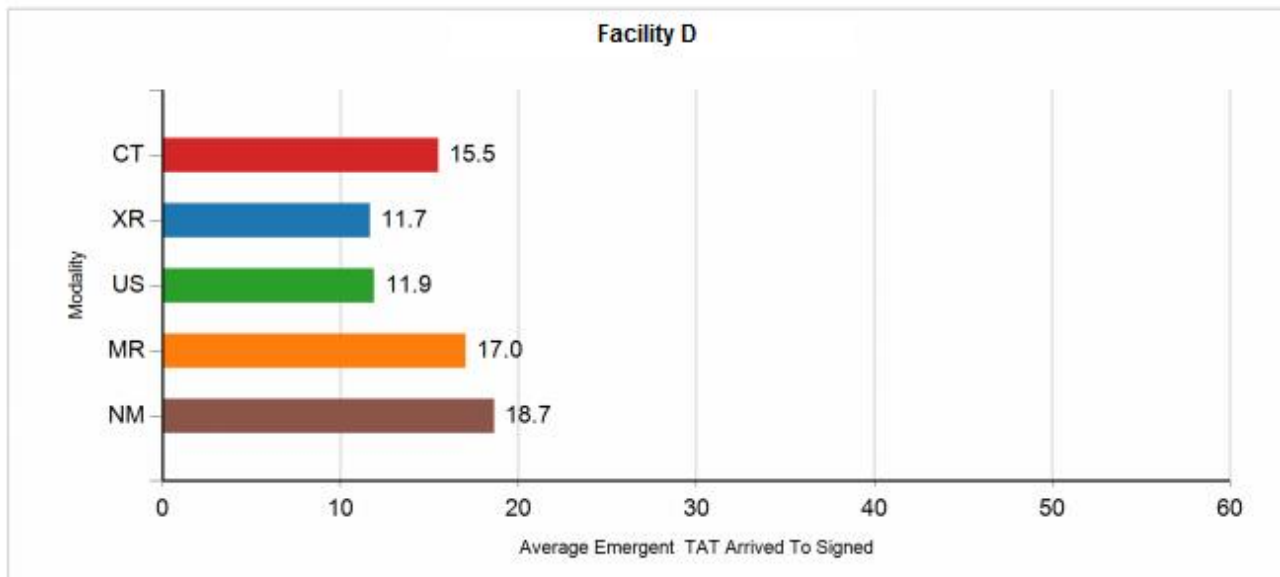


Modality	Jan	Feb	Mar	Apr	May	Jun	Jul	Aug	Sep	Oct	Nov	Dec	Total
CT	21.2	18.0	22.8	25.1	25.3	28.3	27.9	28.7	26.4	21.5	16.1	23.7	23.9
XR	19.0	21.1	21.3	19.9	25.2	23.9	29.5	29.3	24.2	15.4	10.2	20.8	21.7
US	7.7	-	18.1	24.0	15.8	23.0	24.9	21.4	17.6	14.2	12.0	27.6	20.6
MR	26.8	17.8	26.6	21.1	30.0	21.9	30.9	33.9	31.1	19.2	18.0	34.0	26.2
NM	13.4	17.9	-	7.0	17.9	32.2	27.1	28.1	22.3	12.0	23.8	14.3	19.6
FL	-	-	-	-	-	-	32.1	-	-	-	-	-	32.1
Total	20.9	18.0	23.0	25.1	25.3	28.2	28.0	28.6	26.4	21.2	16.0	23.8	23.9



# Acme Radiology Group

## Teleradiology Activity Jan 2014 - Dec 2014



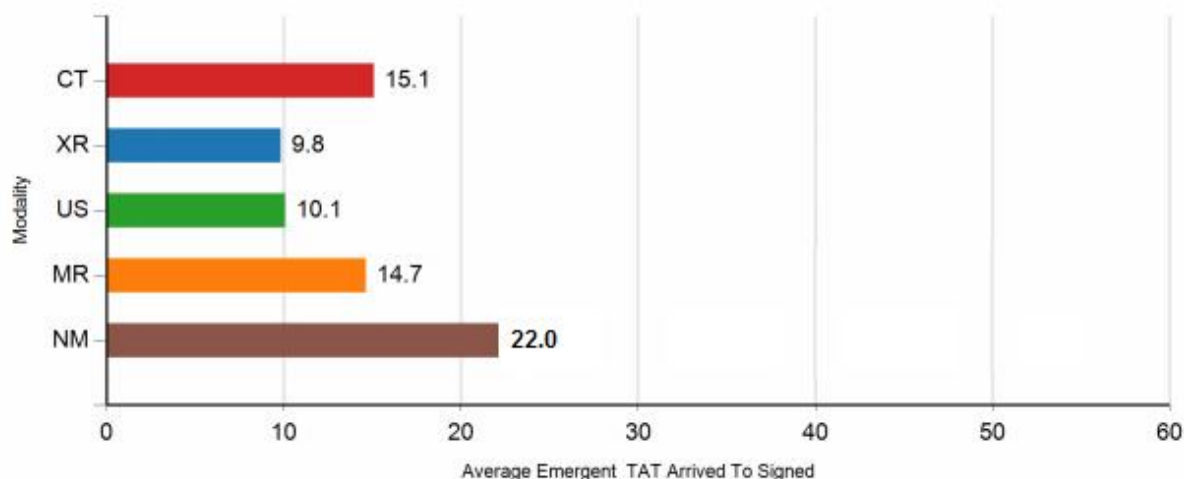
Modality	Jan	Feb	Mar	Apr	May	Jun	Jul	Aug	Sep	Oct	Nov	Dec	Total
CT	13.2	12.2	14.8	13.7	15.3	18.2	17.1	18.8	16.1	15.8	12.6	16.8	15.5
XR	10.0	8.7	14.2	12.8	10.7	12.0	15.6	19.7	12.9	9.8	6.8	11.4	11.7
US	12.8	11.4	9.6	12.8	10.9	18.7	14.3	11.5	10.7	13.4	8.9	9.8	11.9
MR	-	5.0	19.2	-	9.0	-	27.3	21.7	12.4	-	8.3	-	17.0
NM	-	-	21.9	47.1	10.3	-	-	7.6	8.0	21.5	-	-	18.7
<b>Total</b>	<b>12.5</b>	<b>11.4</b>	<b>13.8</b>	<b>13.7</b>	<b>13.8</b>	<b>16.8</b>	<b>16.8</b>	<b>17.8</b>	<b>14.6</b>	<b>14.2</b>	<b>11.0</b>	<b>14.3</b>	<b>14.3</b>



# Acme Radiology Group

## Teleradiology Activity Jan 2014 - Dec 2014

Facility E



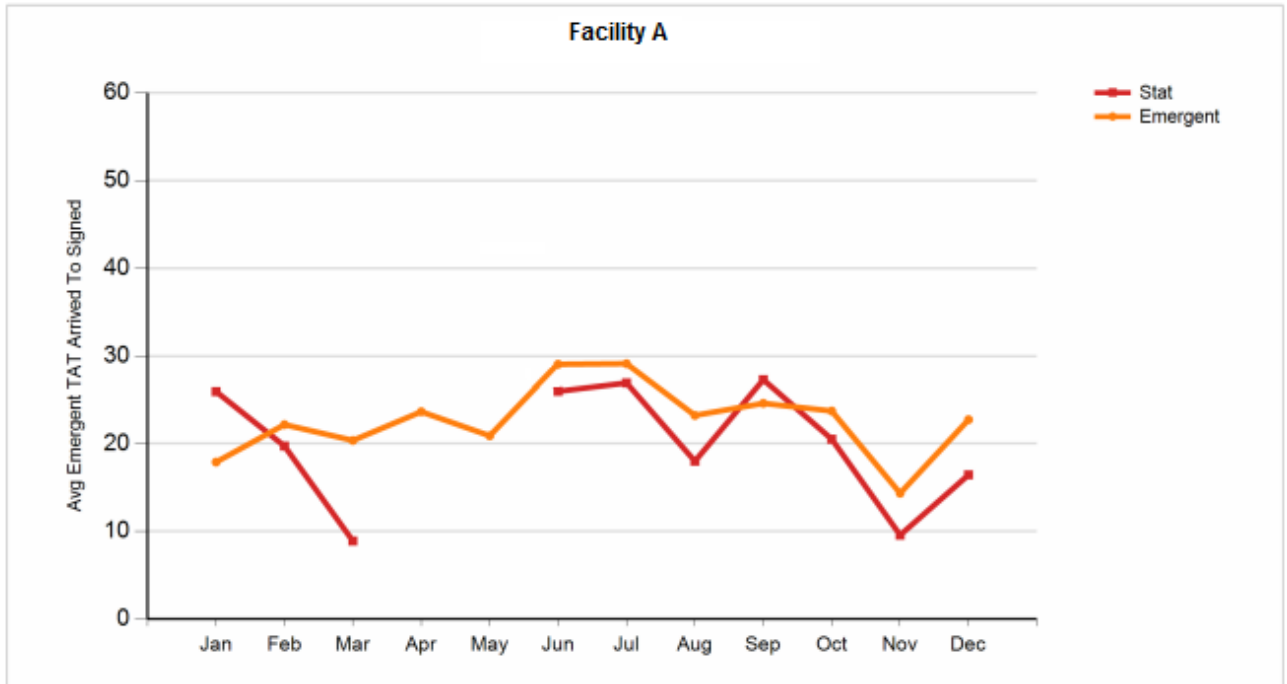
Modality	Jan	Feb	Mar	Apr	May	Jun	Jul	Aug	Sep	Oct	Nov	Dec	Total
CT	10.2	14.9	14.4	16.0	14.8	17.5	18.7	15.3	15.3	13.2	13.1	16.8	15.1
XR	10.9	7.4	7.4	9.5	8.3	19.8	18.1	11.4	11.0	7.7	9.9	8.3	9.8
US	11.0	5.9	3.6	8.6	9.0	8.0	5.7	17.7	-	13.4	13.0	18.4	10.1
MR	13.0	-	15.4	13.2	5.8	-	15.1	-	24.5	20.4	15.8	-	14.7
NM	-	-	-	-	-	-	-	-	22.0	-	-	-	22.0
Total	10.4	14.0	13.7	14.6	12.3	17.4	17.9	14.9	15.4	12.5	12.9	15.6	14.3



# Acme Radiology Group

## Teleradiology Activity Jan 2014 - Dec 2014

### Average Emergent TAT by Priority – YTD

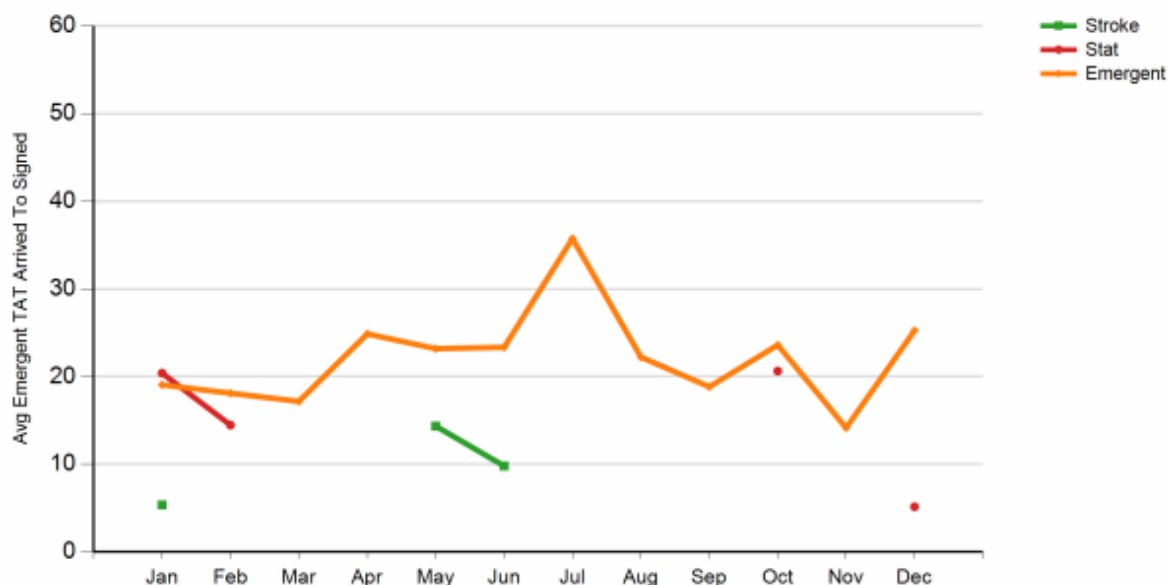


Priority	Jan	Feb	Mar	Apr	May	Jun	Jul	Aug	Sep	Oct	Nov	Dec	Total
Stat	25.9	19.7	8.9	-	-	26.0	26.9	18.0	27.3	20.5	9.6	16.4	20.6
Emergent	17.9	22.2	20.4	23.6	20.9	29.1	29.1	23.2	24.6	23.7	14.3	22.7	22.8
Total	18.9	22.0	20.2	23.6	21.6	28.7	28.2	21.6	25.4	22.6	12.1	21.8	22.4

# Acme Radiology Group

## Teleradiology Activity Jan 2014 - Dec 2014

Facility B



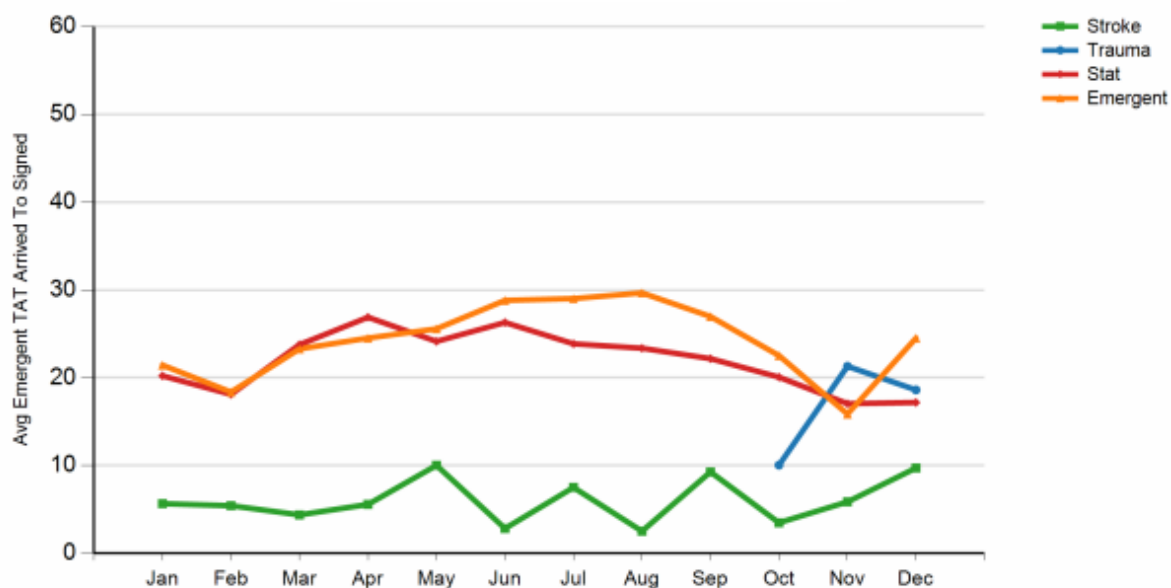
Priority	Jan	Feb	Mar	Apr	May	Jun	Jul	Aug	Sep	Oct	Nov	Dec	Total
Stroke	5.4	-	-	-	14.4	9.8	-	-	-	-	-	-	9.8
Stat	20.4	14.5	-	-	-	-	-	-	-	20.6	-	5.2	18.1
Emergent	19.1	18.1	17.2	24.9	23.2	23.3	35.7	22.2	18.8	23.6	14.1	25.3	21.9
Total	19.2	17.2	17.2	24.9	22.9	22.8	35.7	22.2	18.8	23.4	14.1	23.9	21.5



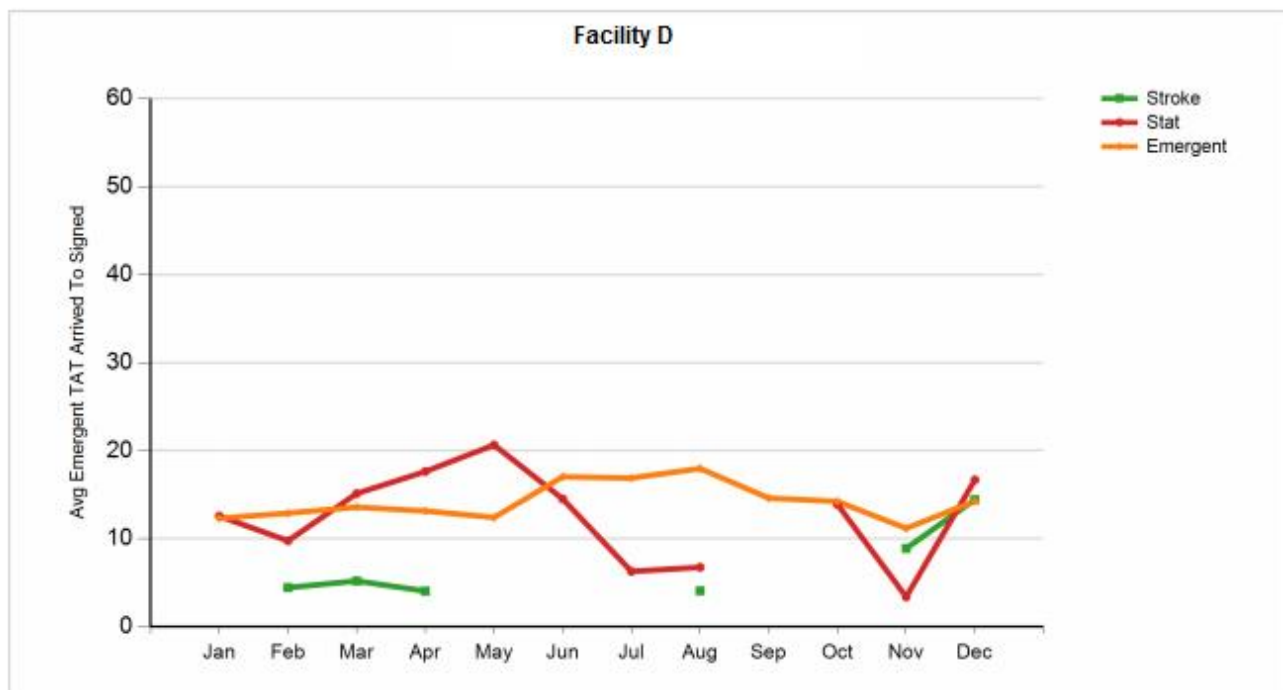
# Acme Radiology Group

## Teleradiology Activity Jan 2014 - Dec 2014

Facility C



Priority	Jan	Feb	Mar	Apr	May	Jun	Jul	Aug	Sep	Oct	Nov	Dec	Total
Stroke	5.7	5.4	4.4	5.6	10.0	2.8	7.5	2.5	9.3	3.5	5.9	9.7	5.3
Trauma	-	-	-	-	-	-	-	-	-	10.0	21.3	18.6	12.7
Stat	20.2	18.1	23.8	26.9	24.1	26.3	23.9	23.4	22.2	20.1	17.0	17.2	22.4
Emergent	21.4	18.4	23.3	24.5	25.6	28.8	29.0	29.7	27.0	22.5	15.9	24.5	24.5
Total	20.9	18.0	23.0	25.1	25.3	28.2	28.0	28.6	26.4	21.2	16.0	23.8	23.9

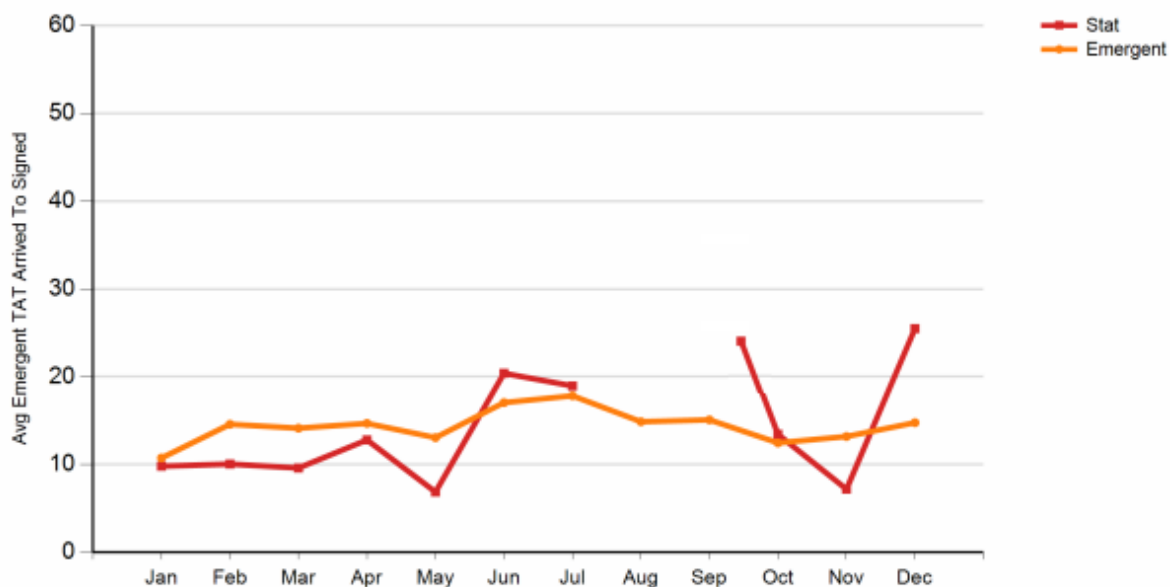


Priority	Jan	Feb	Mar	Apr	May	Jun	Jul	Aug	Sep	Oct	Nov	Dec	Total
Stroke	-	4.4	5.2	4.0	-	-	-	4.1	-	-	8.9	14.4	7.0
Stat	12.6	9.8	15.1	17.6	20.7	14.5	6.3	6.8	-	13.9	3.4	16.7	13.3
Emergent	12.3	12.9	13.6	13.1	12.4	17.0	16.9	18.0	14.6	14.2	11.2	14.3	14.6
<b>Total</b>	<b>12.5</b>	<b>11.4</b>	<b>13.8</b>	<b>13.7</b>	<b>13.8</b>	<b>16.8</b>	<b>16.8</b>	<b>17.8</b>	<b>14.6</b>	<b>14.2</b>	<b>11.0</b>	<b>14.3</b>	<b>14.3</b>

# Acme Radiology Group

## Teleradiology Activity Jan 2014 - Dec 2014

Facility E



Priority	Jan	Feb	Mar	Apr	May	Jun	Jul	Aug	Sep	Oct	Nov	Dec	Total
Stat	9.8	10.1	9.6	12.8	6.9	20.4	19.0	-	24.8	13.4	7.2	25.5	12.3
Emergent	10.7	14.6	14.1	14.7	13.1	17.1	17.8	14.9	15.1	12.5	13.2	14.8	14.5
Total	10.4	14.0	13.7	14.6	12.3	17.4	17.9	14.9	15.4	12.5	12.9	15.6	14.3



**Acme Radiology Group**  
Teleradiology Activity Jan 2014 - Dec 2014

**Critical Findings in Dec 2014**

Critical Findings is for the most recent month, Dec 2014

**Facility A**

Procedure	Accession	Priority	Arrived	Signed	CF Identified	CF Communicated	TAT
CT ABDOMEN & PELVIS WITHOUT	14122	Emergent	12/25 23:42	12/26 00:04	12/26 00:00	12/26 00:25	22
CT ABDOMEN & PELVIS WITHOUT	1412	Emergent	12/18 22:02	12/18 22:11	12/18 22:08	12/18 22:12	9
CT ABDOMEN & PELVIS W	14120	Emergent	12/09 03:38	12/09 04:00	12/09 04:11	12/09 04:13	22
CT ABDOMEN & PELVIS W	141204	Emergent	12/04 04:13	12/04 04:29	12/04 04:25	12/04 04:32	16

**Facility B**

Procedure	Accession	Priority	Arrived	Signed	CF Identified	CF Communicated	TAT
CT CHEST W	CT201	Trauma	12/29 01:53	12/29 02:09	12/29 02:04	12/29 02:19	16
CT BRAIN/HEAD	CT2014	Emergent	12/27 06:31	12/27 06:53	12/27 06:48	12/27 09:23	22

**Facility C**

Procedure	Accession	Priority	Arrived	Signed	CF Identified	CF Communicated	TAT
CT ABDOMEN & PELVIS W	0007319	Emergent	12/30 00:49	12/30 01:07	12/30 01:05	12/30 01:19	18
CTA/V BRAIN/CIRCLE OF WILLIS OR VENOUS SINUSES	000731	Emergent	12/22 21:41	12/22 22:55	12/22 22:15	12/22 22:18	14
CT ABDOMEN & PELVIS W	0007312	Emergent	12/21 20:31	12/21 20:51	12/21 20:58	12/21 21:00	20
CT ANGIOGRAPHY CHEST	000729	Stat	12/08 00:35	12/08 00:49	12/08 00:42	12/08 00:56	14

**Facility D**

Procedure	Accession	Priority	Arrived	Signed	CF Identified	CF Communicated	TAT
CT BRAIN/HEAD	0006685	Stat	12/29 01:15	12/29 01:51	12/29 01:39	12/29 01:50	36
CT ABDOMEN & PELVIS W	000668	Emergent	12/25 00:56	12/25 01:16	12/25 01:16	12/25 01:24	20
CT ABDOMEN & PELVIS W	0006674	Emergent	12/17 20:03	12/17 20:09	12/17 20:09	12/17 20:40	6
CT SOFT TISSUE NECK	000667	Emergent	12/17 03:04	12/17 03:28	12/17 03:28	12/17 04:03	24
CT ABDOMEN & PELVIS W	0006659	Emergent	12/08 23:43	12/08 23:52	12/08 23:52	12/09 00:05	9

**Quality Assurance (QA) Data**

For 24/7 access to your QA data, please visit the Quality Assurance Client Portal at [access.vrad.com](https://access.vrad.com).



### **Facts About Your vRad Teleradiology Metrics Report:**

**Q: How are Turnaround Times (TATs) calculated?**

**A:** Turnaround times are calculated from the time the order was assigned to the radiologist worklist to the time the report was signed by the radiologist, in minutes.

**Q: Am I able to access this information from the vRad Reporting Portal?**

**A:** At this time, your report will be distributed to you via email, but we plan to offer portal access in the near future.

**Q: Am I able to request additional information from my Teleradiology Metrics Report?**

**A:** The vRad Analytics Teleradiology Metrics Report is a free monthly standard document, updated with your practice's information. vRad has additional radiology analytics solutions that include customization options. Please speak to your Account Manager to discuss further.

**Q: What should I do if I have a question about my report?**

**A:** If you have any questions about your report, please contact your Account Manager.

**Have questions regarding your vRad Analytics Teleradiology Metrics Report or would you like more information about vRad's products and services? Contact your Account Manager or Call Us at 800.737.0610 or Email us at [info@vRad.com](mailto:info@vRad.com).**

#### **vRad Snapshot**

**vRad is a global telemedicine company and the nation's leading radiology practice.**

- Founded 2001, an affiliate of MEDNAX (NYSE: MD)
- 350+ U.S. board-certified and eligible radiologists, 75% subspecialty trained
- 2,100+ hospital, health system and radiology group facilities served
- Over 14,000 daily reads – totaling 5 million+ annual studies
- U.S.-based, 24/7 operations and technical support center
- Largest PACS implementation worldwide – moving over 1.3 billion radiology images annually
- The largest – and only – radiology patient care benchmarking platform (vRad RPC Index): 30 million+ studies, growing at 400,000 per month
- 15 issued patents highlighting innovation in telemedicine workflow; additional patents pending on data normalization, efficiency in workflow coordination, and deep learning applications within telemedicine.
- Frost & Sullivan Visionary Innovation Award Winner: Medical Imaging Analytics - North America