



Enabling better decisions for the health of patients and
the practice of radiology

vRad Analytics: Hospital Insight Report - Health System Summary
prepared exclusively for:

Acme Hospital

Your vRad Account Manager: Adam Smith
Contact Information: 800.737.0610

ABOUT YOUR HOSPITAL INSIGHT REPORT:

This report was created exclusively for your organization. It provides a year-to-date monthly rolling snapshot of your imaging activity. It is an example of the type of unique information available from partnering with vRad.

Hospital Insight (HI) Reports provide a 24x7 look inside your imaging data by leveraging access to vRad's clinical data repository and our patent-pending data normalization solution. That means you'll receive a complete, consistent and integrated picture across all of your facilities, including findings-based metrics on all of your radiology studies using vRad's state-of-the-art NLP (natural language processing) tools.

Your personalized HI Report is a one important input to help make informed decisions based on facts to lower costs, improve quality and provide exceptional patient care. Your commitment to Final Interpretations with vRad now gives you the opportunity to *See Inside Your Data* – and turn information into action for your organization. It's a complimentary report delivered right to your email inbox each month—simply click the report link to unlock and explore your data.

Please let your vRad Account Manager know if you have any questions or comments to share.

Thank you for the trust you put in vRad every day.

For compliance and privacy purposes, QA data is not included in your Hospital Insight Report. **To access your specific facility(s) QA data, login to our client portal at: access.vrad.com.**

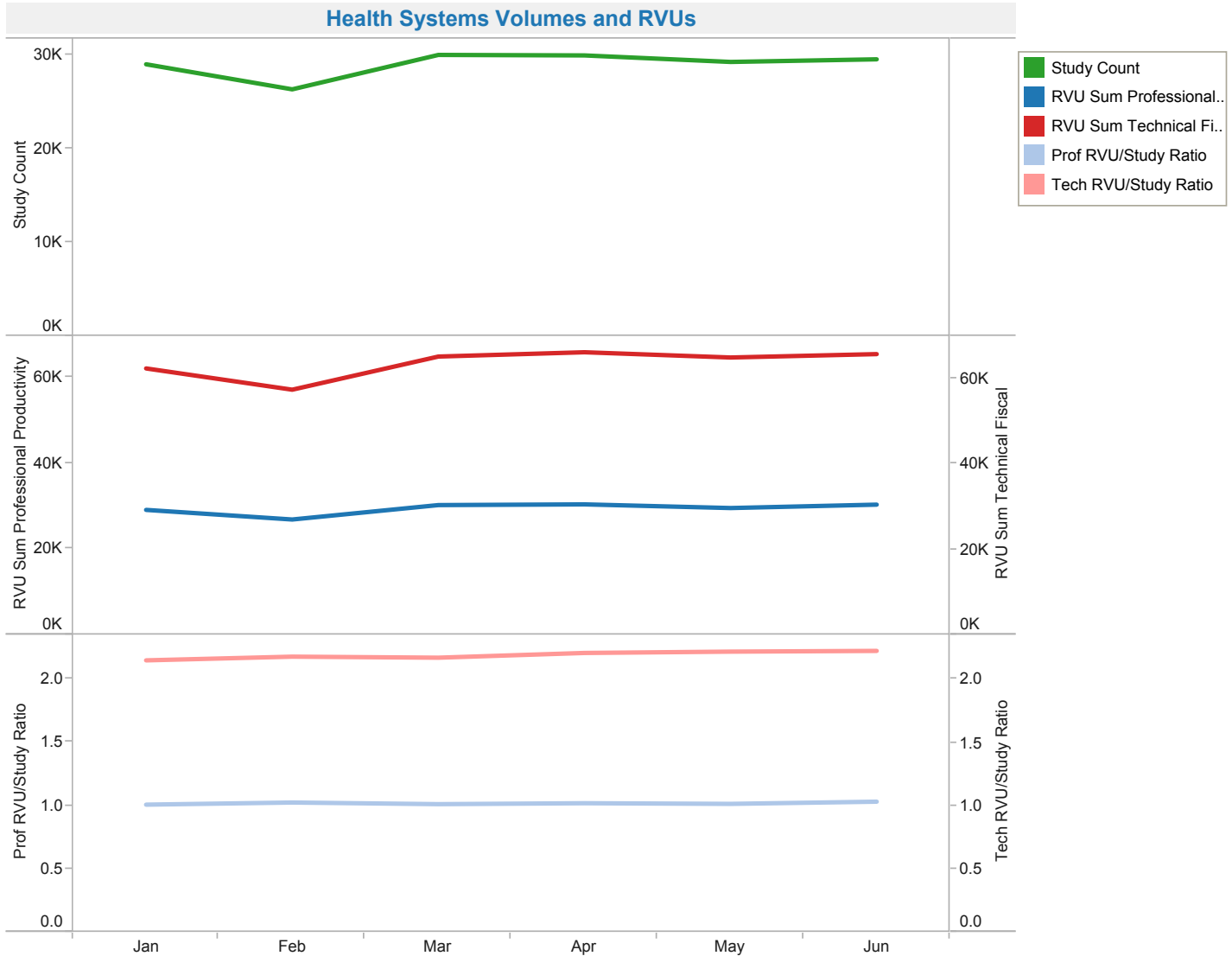


Hospital Insight Report - Health System Summary

January 2015 - June 2015



Your Imaging Activity



Health System Volumes and RVUs									
	Jan	Feb	Mar	Apr	May	Jun	Grand Total	Change	
Study Count	28,926	26,258	29,923	29,870	29,176	29,456	173,609	0.96%	
RVU Sum Professional Productivity	29,085	26,845	30,206	30,372	29,517	30,310	176,335	2.69%	
RVU Sum Technical Fiscal	62,169	57,203	64,943	65,947	64,722	65,513	380,497	1.22%	
Avg. Prof RVU/Study Ratio	1.01	1.02	1.01	1.02	1.01	1.03	1.02	0.02	
Avg. Tech RVU/Study Ratio	2.15	2.18	2.17	2.21	2.22	2.22	2.19	0.00	

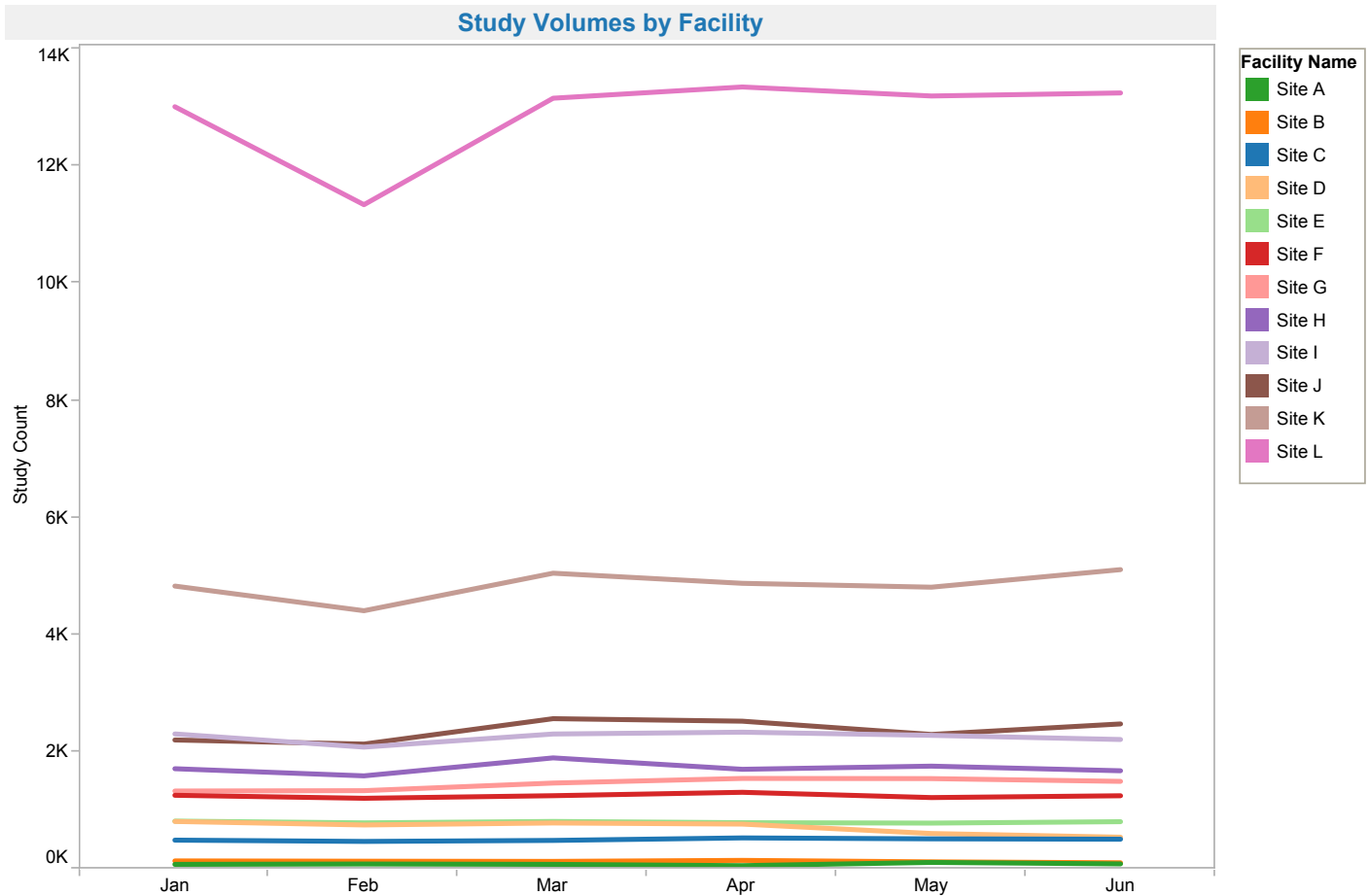


Hospital Insight Report - Health System Summary

January 2015 - June 2015



Your Study Volumes



Study Volumes by Facility									
Facility Name	Jan	Feb	Mar	Apr	May	Jun	Grand Total	Change	
Site A	72	78	72	50	105	80	457	-23.81%	
Site B	131	126	123	140	115	99	734	-13.91%	
Site C	486	464	481	524	508	502	2,965	-1.18%	
Site D	805	745	779	760	599	536	4,224	-10.52%	
Site E	811	781	805	784	777	801	4,759	3.09%	
Site F	1,252	1,201	1,245	1,303	1,213	1,244	7,458	2.56%	
Site G	1,325	1,331	1,461	1,540	1,537	1,490	8,684	-3.06%	
Site H	1,706	1,584	1,891	1,696	1,750	1,671	10,298	-4.51%	
Site I	2,300	2,075	2,299	2,330	2,276	2,205	13,485	-3.12%	
Site J	2,197	2,127	2,561	2,518	2,291	2,471	14,165	7.86%	
Site K	4,826	4,405	5,046	4,873	4,807	5,107	29,064	6.24%	
Site L	13,015	11,341	13,160	13,352	13,198	13,250	77,316	0.39%	
Grand Total	28,926	26,258	29,923	29,870	29,176	29,456	173,609	0.96%	

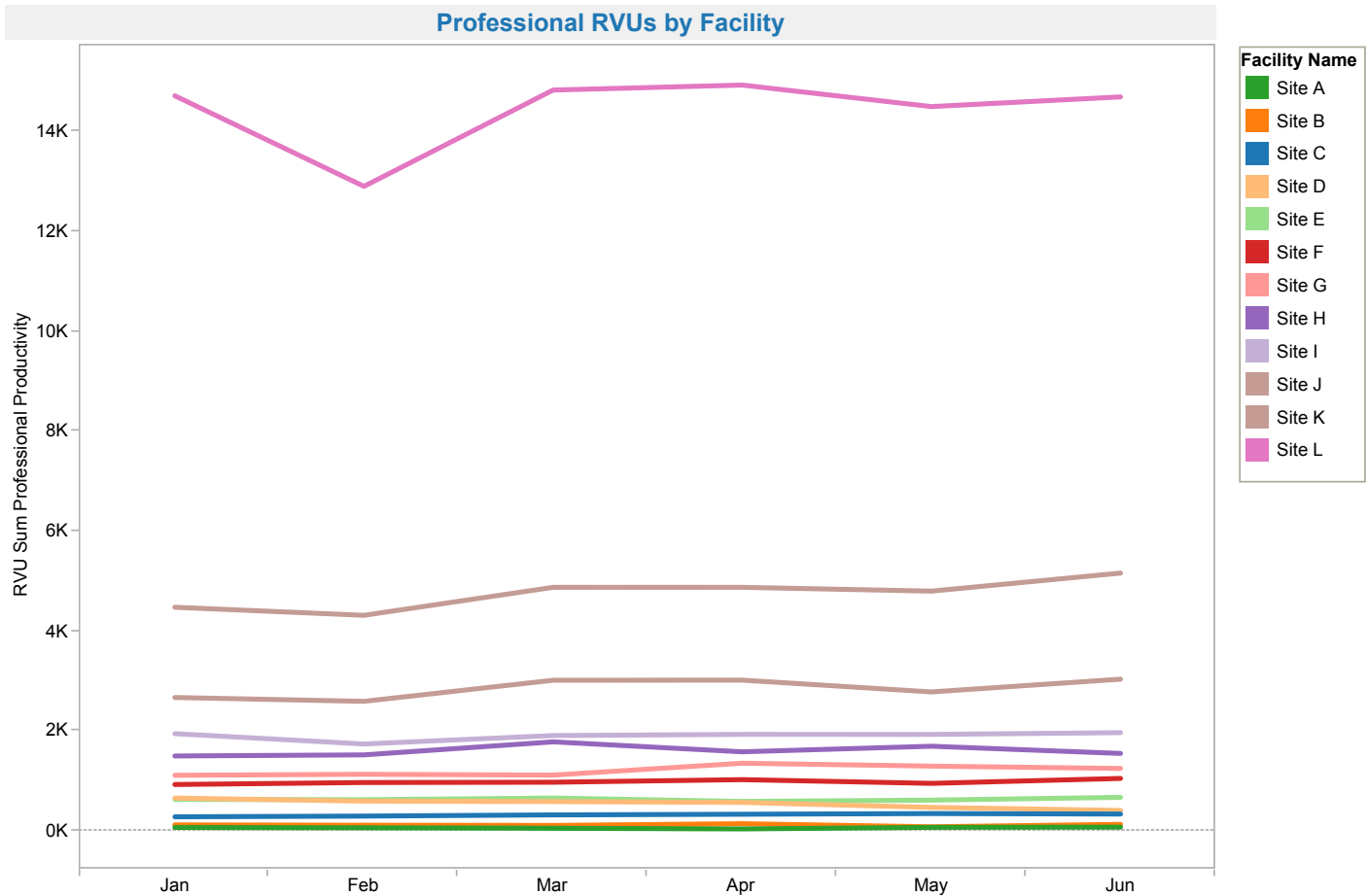


Hospital Insight Report - Health System Summary

January 2015 - June 2015



Your Professional RVUs



Professional RVUs by Facility

Facility Name	Jan	Feb	Mar	Apr	May	Jun	Grand Total	Change
Site A	67	61	51	38	69	74	360	6.65%
Site B	119	113	108	142	81	130	693	60.84%
Site C	281	295	319	332	346	336	1,908	-2.90%
Site D	656	595	585	568	469	409	3,281	-12.81%
Site E	629	624	656	589	615	670	3,782	8.99%
Site F	927	967	973	1,024	950	1,049	5,889	10.40%
Site G	1,112	1,131	1,115	1,353	1,295	1,248	7,254	-3.59%
Site H	1,498	1,520	1,781	1,581	1,693	1,549	9,622	-8.52%
Site I	1,944	1,738	1,907	1,930	1,929	1,965	11,413	1.82%
Site J	2,668	2,591	3,013	3,016	2,780	3,035	17,104	9.19%
Site K	4,474	4,313	4,873	4,873	4,797	5,158	28,489	7.53%
Site L	14,710	12,898	14,825	14,924	14,494	14,688	86,539	1.34%
Grand Total	29,085	26,845	30,206	30,372	29,517	30,310	176,335	2.69%

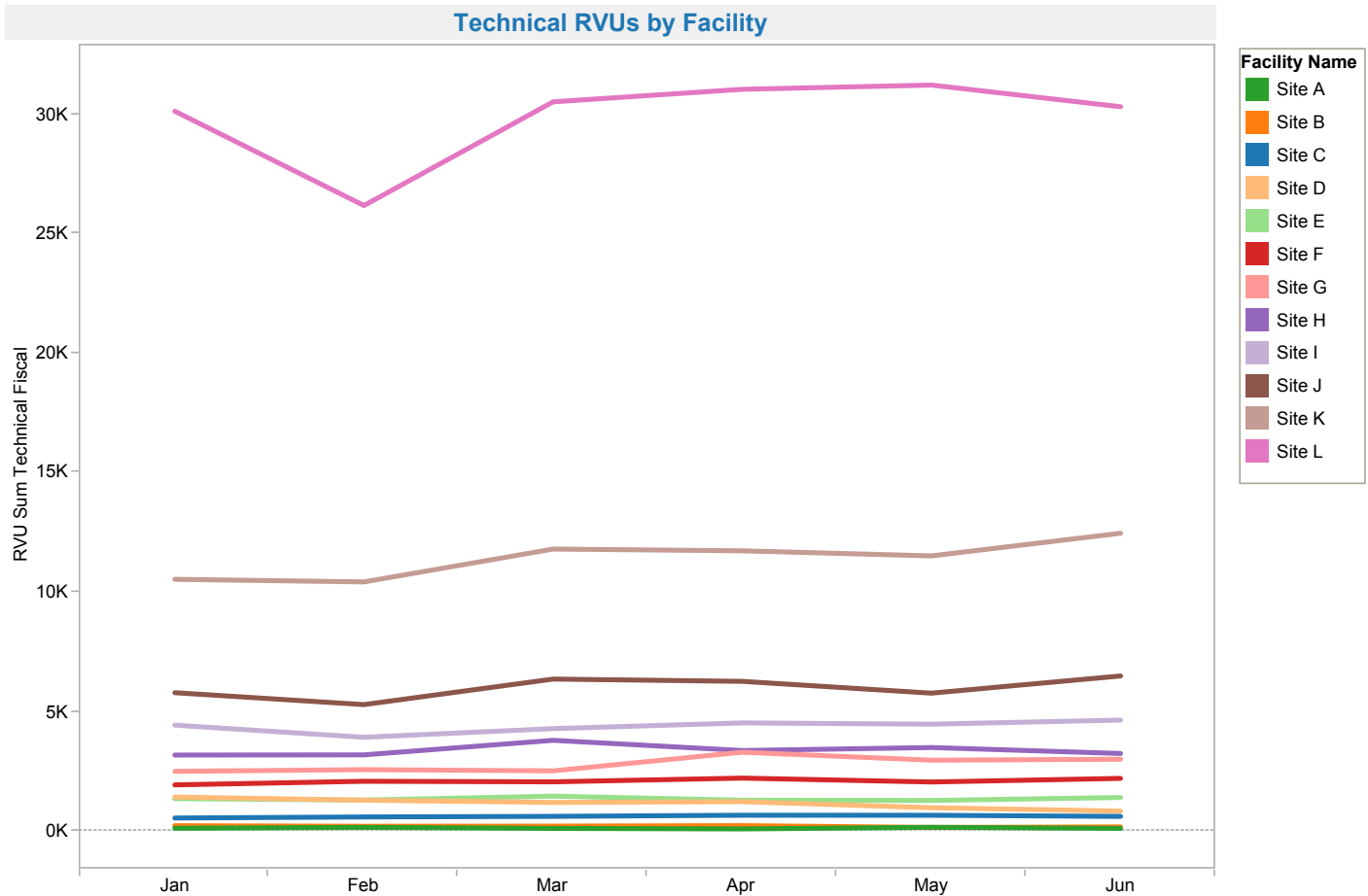


Hospital Insight Report - Health System Summary

January 2015 - June 2015



Your Technical RVUs



Technical RVUs by Facility

Facility Name	Jan	Feb	Mar	Apr	May	Jun	Grand Total	Change
Site A	119	157	114	92	160	115	757	-28.11%
Site B	228	203	211	230	154	178	1,203	15.69%
Site C	549	593	618	665	663	616	3,704	-7.07%
Site D	1,427	1,293	1,200	1,231	979	838	6,968	-14.44%
Site E	1,358	1,300	1,464	1,294	1,282	1,407	8,104	9.79%
Site F	1,935	2,085	2,062	2,218	2,055	2,206	12,561	7.36%
Site G	2,501	2,572	2,522	3,300	2,967	3,007	16,868	1.36%
Site H	3,183	3,190	3,799	3,371	3,497	3,248	20,288	-7.12%
Site I	4,433	3,925	4,288	4,526	4,474	4,645	26,292	3.83%
Site J	5,790	5,292	6,361	6,265	5,771	6,491	35,971	12.47%
Site K	10,533	10,425	11,799	11,725	11,513	12,460	68,454	8.23%
Site L	30,113	26,168	30,506	31,030	31,207	30,301	179,326	-2.90%
Grand Total	62,169	57,203	64,943	65,947	64,722	65,513	380,497	1.22%

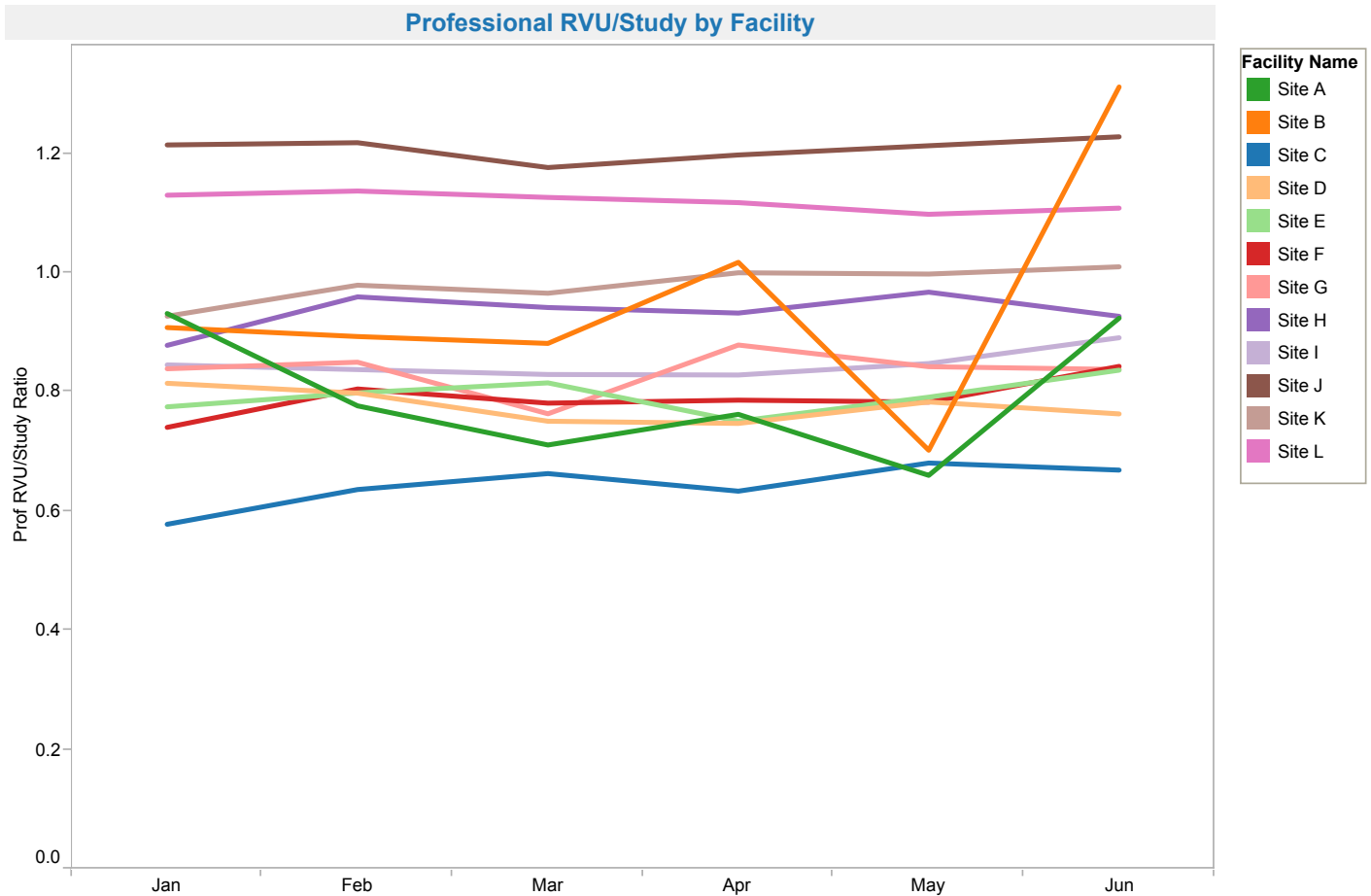


Hospital Insight Report - Health System Summary

January 2015 - June 2015



Your Professional RVU/Study Ratios



Professional RVU/Study by Facility

Facility Name	Jan	Feb	Mar	Apr	May	Jun	Grand Total	Change
Site A	0.93	0.78	0.71	0.76	0.66	0.92	0.79	39.98%
Site B	0.91	0.89	0.88	1.02	0.70	1.31	0.95	86.84%
Site C	0.58	0.64	0.66	0.63	0.68	0.67	0.64	-1.74%
Site D	0.81	0.80	0.75	0.75	0.78	0.76	0.78	-2.56%
Site E	0.78	0.80	0.82	0.75	0.79	0.84	0.79	5.73%
Site F	0.74	0.80	0.78	0.79	0.78	0.84	0.79	7.65%
Site G	0.84	0.85	0.76	0.88	0.84	0.84	0.84	-0.55%
Site H	0.88	0.96	0.94	0.93	0.97	0.93	0.93	-4.19%
Site I	0.85	0.84	0.83	0.83	0.85	0.89	0.85	5.10%
Site J	1.21	1.22	1.18	1.20	1.21	1.23	1.21	1.24%
Site K	0.93	0.98	0.97	1.00	1.00	1.01	0.98	1.21%
Site L	1.13	1.14	1.13	1.12	1.10	1.11	1.12	0.94%
Grand Total	0.88	0.89	0.87	0.89	0.86	0.95	0.89	9.48%

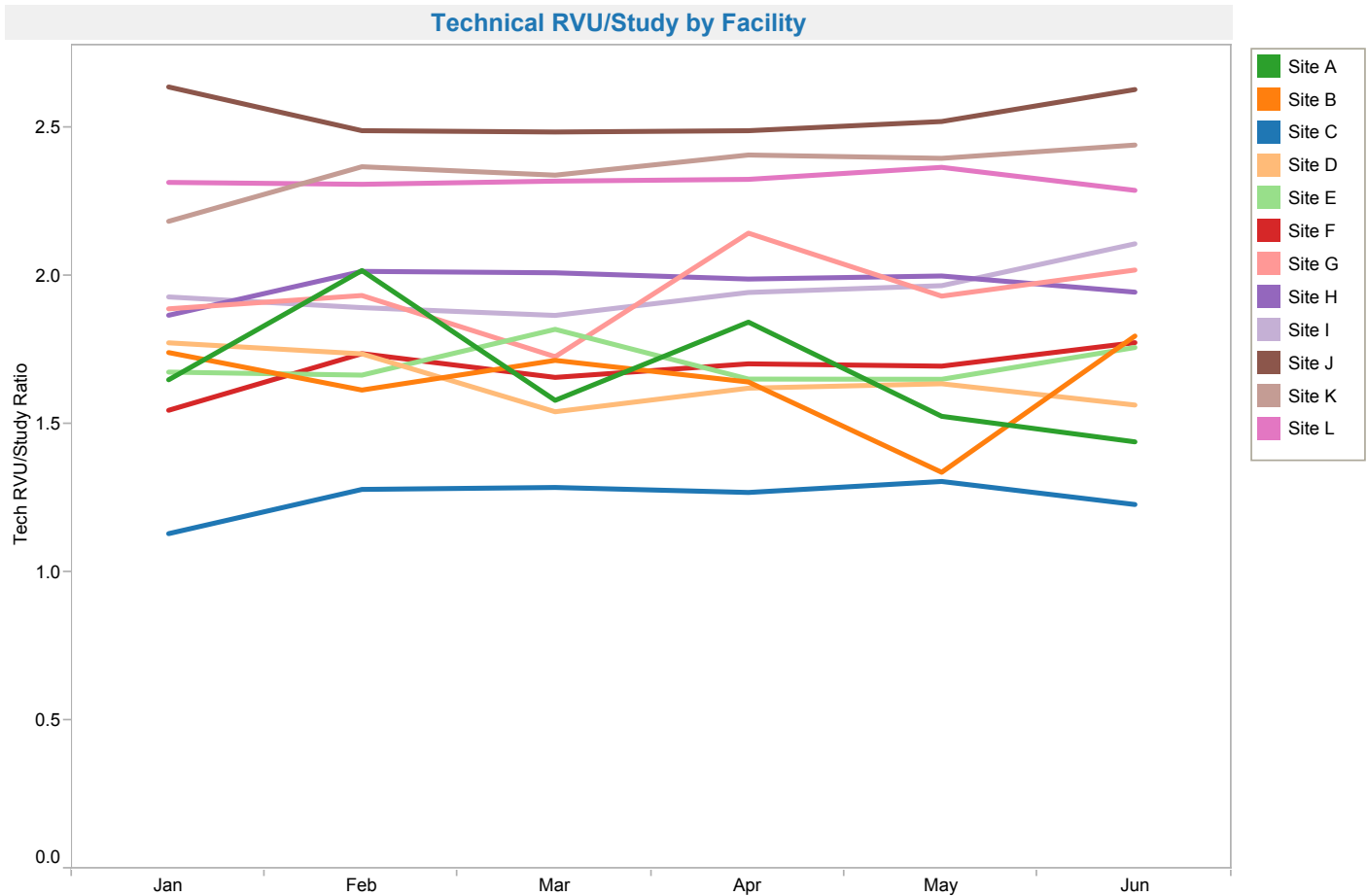


Hospital Insight Report - Health System Summary

January 2015 - June 2015



Your Technical RVU/Study Ratios



Technical RVU/Study by Facility									
Facility Name	Jan	Feb	Mar	Apr	May	Jun	Grand Total	Change	
Site A	1.65	2.02	1.58	1.84	1.53	1.44	1.68	-5.65%	
Site B	1.74	1.61	1.71	1.64	1.34	1.80	1.64	34.39%	
Site C	1.13	1.28	1.29	1.27	1.31	1.23	1.25	-5.95%	
Site D	1.77	1.74	1.54	1.62	1.63	1.56	1.64	-4.39%	
Site E	1.67	1.66	1.82	1.65	1.65	1.76	1.70	6.50%	
Site F	1.55	1.74	1.66	1.70	1.69	1.77	1.68	4.68%	
Site G	1.89	1.93	1.73	2.14	1.93	2.02	1.94	4.56%	
Site H	1.87	2.01	2.01	1.99	2.00	1.94	1.97	-2.73%	
Site I	1.93	1.89	1.87	1.94	1.97	2.11	1.95	7.18%	
Site J	2.64	2.49	2.48	2.49	2.52	2.63	2.54	4.28%	
Site K	2.18	2.37	2.34	2.41	2.39	2.44	2.35	1.87%	
Site L	2.31	2.31	2.32	2.32	2.36	2.29	2.32	-3.28%	
Grand Total	1.86	1.92	1.86	1.92	1.86	1.91	1.89	2.96%	

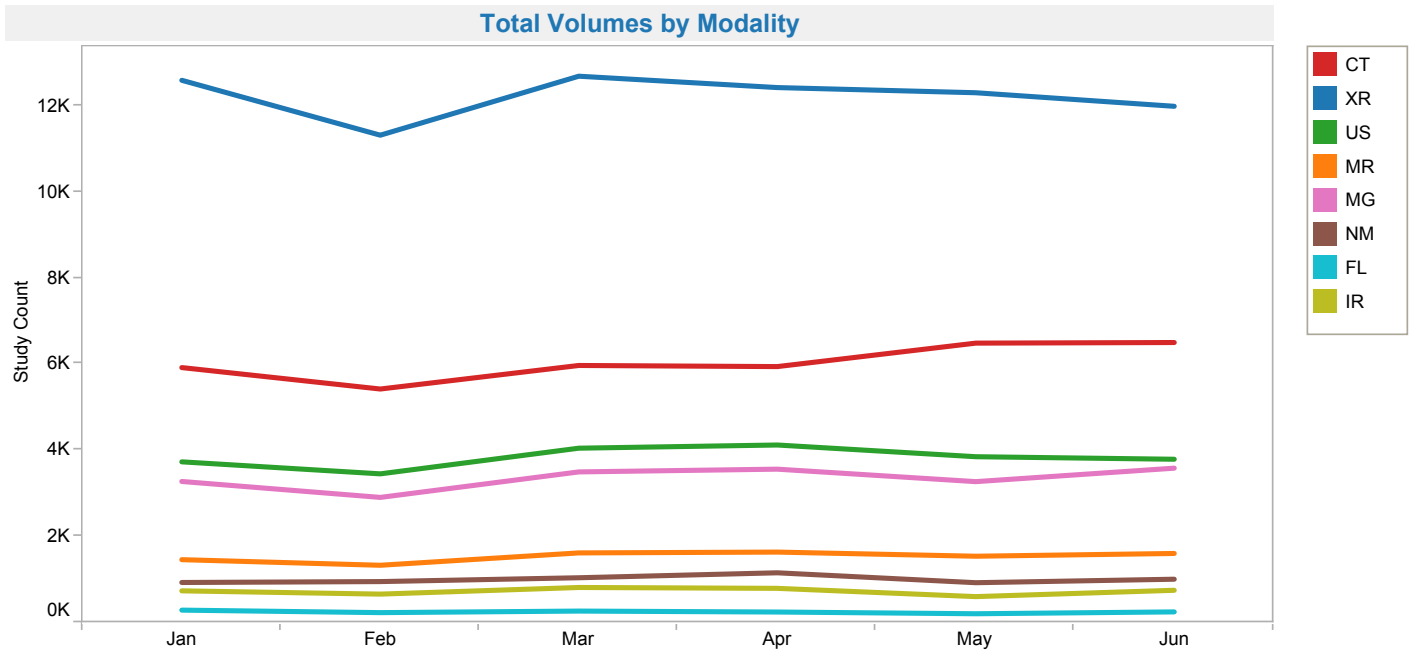


Hospital Insight Report - Health System Summary

January 2015 - June 2015



Your Modality Volumes



Total Volumes by Modality

		Jan	Feb	Mar	Apr	May	Jun	Grand Total	
CT	Site A	10	14	11	4	11	10	60	
	Site B	20	19	21	25	17	18	120	
	Site C	92	97	119	112	140	132	692	
	Site D	167	150	144	132	136	113	842	
	Site E	216	207	193	164	194	211	1,185	
	Site F	267	297	286	299	278	339	1,766	
	Site G	312	330	290	348	388	343	2,011	
	Site H	298	296	381	324	351	336	1,986	
	Site I	471	440	449	478	498	507	2,843	
	Site J	278	219	249	227	291	372	1,636	
	Site K	976	1,007	1,096	1,119	1,169	1,287	6,654	
	Site L	2,809	2,342	2,726	2,707	3,011	2,830	16,425	
	MR	Site A	2	1	2	3	1	1	10
Site B		7	2	7	7	1	5	29	
Site D		28	19	33	23	16	14	133	
Site E		15	26	37	16	30	36	160	
Site F		31	35	40	47	42	41	236	
Site G		35	28	29	48	26	31	197	
Site H		57	59	89	69	74	61	409	
Site I		100	97	131	99	109	123	659	
Site J		63	51	57	54	64	41	330	
Site K		264	242	279	305	259	308	1,657	
Site L		853	765	908	960	913	938	5,337	
Grand Total			7,371	6,743	7,577	7,570	8,019	8,097	45,377



Hospital Insight Report - Health System Summary

January 2015 - June 2015



Your Modality Volumes

		Total Volumes by Modality							
		Jan	Feb	Mar	Apr	May	Jun	Grand Total	
XR	Site A	41	43	45	28	65	48	270	
	Site B	85	85	80	80	79	51	460	
	Site C	366	345	341	389	353	359	2,153	
	Site D	469	423	490	468	352	346	2,548	
	Site E	506	481	492	510	482	482	2,953	
	Site F	793	668	728	723	700	665	4,277	
	Site G	711	701	797	757	819	756	4,541	
	Site H	786	621	768	743	705	698	4,321	
	Site I	1,265	1,160	1,243	1,249	1,236	1,087	7,240	
	Site J	664	661	787	794	715	711	4,332	
	Site K	2,424	2,069	2,377	2,192	2,190	2,282	13,534	
	Site L	4,478	4,056	4,535	4,486	4,603	4,499	26,657	
US	Site A	14	14	11	14	22	13	88	
	Site B	7	10	7	11	11	9	55	
	Site C	19	20	19	21	14	11	104	
	Site D	79	85	65	59	56	43	387	
	Site E	39	31	47	53	36	41	247	
	Site F	76	111	95	120	107	98	607	
	Site G	136	146	157	219	158	155	971	
	Site H	305	298	339	301	329	320	1,892	
	Site I	251	209	236	237	227	263	1,423	
	Site J	625	586	746	721	627	707	4,012	
	Site K	651	588	695	677	681	629	3,921	
	Site L	1,525	1,350	1,627	1,685	1,578	1,498	9,263	
MG	Site D	51	52	43	72	36	15	269	
	Site E	28	33	28	29	31	29	178	
	Site F	72	78	84	104	80	94	512	
	Site G	108	106	168	128	118	168	796	
	Site H	180	198	206	172	200	202	1,158	
	Site I	174	132	210	224	162	172	1,074	
	Site J	172	194	264	208	172	170	1,180	
	Site K	352	344	430	396	366	450	2,338	
	Site L	2,134	1,764	2,060	2,224	2,102	2,280	12,564	
	NM	Site A	1	4			2	2	9
		Site B	3	2	1	2		2	10
		Site C	1	1		2			4
Site D		9	11	4	5	3	2	34	
Site E		7	3	8	11	3	2	34	
Site F		5	10	10	9	6	7	47	
Site G		21	20	17	40	26	37	161	
Site H		15	32	26	25	22	10	130	
Site I		39	36	28	43	41	51	238	
Site J		378	393	419	459	376	431	2,456	
Site K		96	99	105	109	96	109	614	
Site L		350	335	417	445	345	348	2,240	
FL	Site A	2	1	3	1	2	1	10	
	Site B	6	4	3	7	5	5	30	
	Site D						2	2	
	Site F	1	1					2	
	Site G	1		2		1		4	
	Site H	20	8	25	10	7	8	78	
	Site I		1	2		3	1	7	
	Site J	5	8	9	10	4	3	39	
	Site K	45	35	50	50	26	29	235	
	Site L	203	167	167	161	151	193	1,042	
	IR	Site A	2	1			2	5	10
		Site B	3	4	4	7	2	9	29
Site C		1						1	
Site D		1	2				1	4	
Site G		1		1		1		3	
Site H		40	60	52	44	51	29	276	
Site J		11	14	28	43	40	33	169	
Site K		17	18	9	16	10	10	80	
Site L		655	556	715	679	491	657	3,753	
Grand Total			21,525	19,488	22,325	22,272	21,128	21,338	128,076



Hospital Insight Report - Health System Summary

January 2015 - June 2015

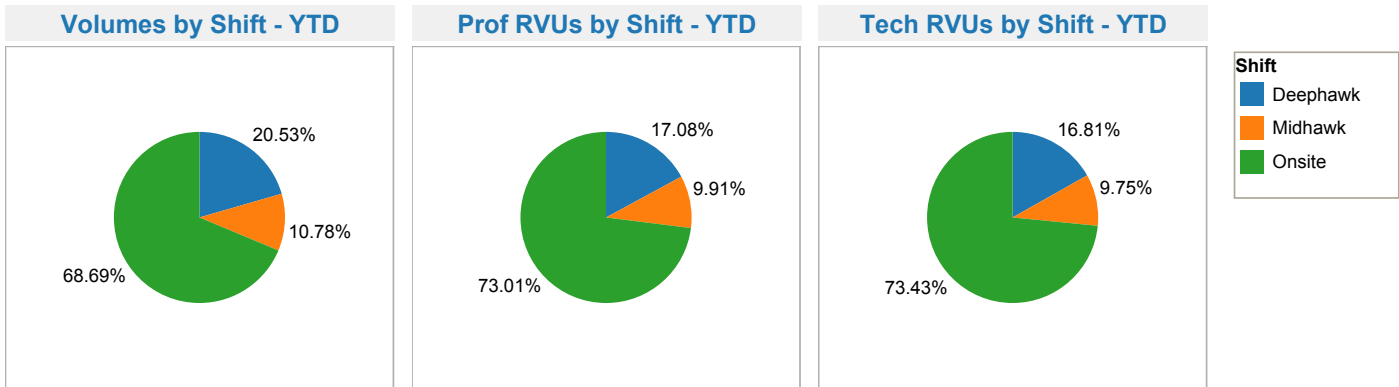


Your Shift Activity

Onsite: Mon-Fri 7am - 5pm and Sat 8am - 12pm

Midhawk: Mon-Fri 5pm - 12am

Deephawk: Mon-Fri 12am - 7am and Sat 12pm - Mon 7am



Total Volumes and RVUs by Shift								
	Hawk Shift	Jan	Feb	Mar	Apr	May	Jun	Grand Total
Study Count	Deephawk	6,040	5,424	5,926	5,595	6,836	5,818	35,639
	Midhawk	3,043	2,653	3,245	3,366	3,121	3,293	18,721
	Onsite	19,843	18,181	20,752	20,909	19,219	20,345	119,249
RVU Sum Professional Productivity	Deephawk	4,994	4,561	4,922	4,622	5,881	5,146	30,126
	Midhawk	2,827	2,502	2,955	3,111	2,938	3,136	17,468
	Onsite	21,264	19,781	22,330	22,639	20,699	22,028	128,742
RVU Sum Technical Fiscal	Deephawk	10,546	9,621	10,357	9,797	12,846	10,812	63,979
	Midhawk	6,033	5,302	6,217	6,688	6,316	6,559	37,114
	Onsite	45,590	42,281	48,369	49,462	45,559	48,142	279,403
Avg. Prof RVU/Study Ratio	Deephawk	0.83	0.84	0.83	0.83	0.86	0.88	0.84
	Midhawk	0.93	0.94	0.91	0.92	0.94	0.95	0.93
	Onsite	1.07	1.09	1.08	1.08	1.08	1.08	1.08
Avg. Tech RVU/Study Ratio	Deephawk	1.75	1.77	1.75	1.75	1.88	1.86	1.79
	Midhawk	1.98	2.00	1.92	1.99	2.02	1.99	1.98
	Onsite	2.30	2.33	2.33	2.37	2.37	2.37	2.34



Hospital Insight Report - Health System Summary

January 2015 - June 2015



Your Shift Activity

Onsite: Mon-Fri 7am - 5pm and Sat 8am - 12pm

Midhawk: Mon-Fri 5pm - 12am

Deephawk: Mon-Fri 12am - 7am and Sat 12pm - Mon 7am

Facility Volumes and RVUs by Shift

			Jan	Feb	Mar	Apr	May	Jun	Grand Total
Onsite	Site A	Study Count	32	38	20	21	39	29	179
		RVU Sum Professional ..	42	37	20	21	30	40	191
		RVU Sum Technical Fis..	62	88	43	50	63	31	338
Site B	Site B	Study Count	76	69	68	79	60	60	412
		RVU Sum Professional ..	87	72	78	89	47	104	477
		RVU Sum Technical Fis..	156	115	140	149	86	130	776
Site C	Site C	Study Count	290	258	299	288	270	269	1,674
		RVU Sum Professional ..	168	155	194	164	183	166	1,029
		RVU Sum Technical Fis..	343	329	386	356	361	310	2,086
Site D	Site D	Study Count	576	548	580	543	406	310	2,963
		RVU Sum Professional ..	481	435	463	428	320	252	2,379
		RVU Sum Technical Fis..	1,086	996	988	955	699	535	5,259
Site E	Site E	Study Count	510	481	508	499	476	533	3,007
		RVU Sum Professional ..	386	400	436	367	376	453	2,418
		RVU Sum Technical Fis..	886	878	1,015	865	814	984	5,443
Site F	Site F	Study Count	880	853	853	862	724	882	5,054
		RVU Sum Professional ..	635	676	659	694	589	723	3,975
		RVU Sum Technical Fis..	1,373	1,548	1,482	1,589	1,349	1,622	8,963
Site G	Site G	Study Count	900	871	976	1,054	1,011	1,065	5,877
		RVU Sum Professional ..	796	771	771	964	858	900	5,061
		RVU Sum Technical Fis..	1,896	1,867	1,887	2,480	2,112	2,312	12,554
Site H	Site H	Study Count	1,325	1,243	1,412	1,293	1,333	1,290	7,896
		RVU Sum Professional ..	1,153	1,203	1,319	1,220	1,310	1,191	7,396
		RVU Sum Technical Fis..	2,461	2,547	2,850	2,636	2,725	2,524	15,742
Site I	Site I	Study Count	1,698	1,532	1,708	1,738	1,623	1,649	9,948
		RVU Sum Professional ..	1,462	1,280	1,420	1,439	1,400	1,481	8,482
		RVU Sum Technical Fis..	3,502	3,067	3,367	3,562	3,435	3,715	20,648
Site J	Site J	Study Count	1,857	1,798	2,186	2,143	1,868	1,995	11,847
		RVU Sum Professional ..	2,420	2,352	2,753	2,820	2,468	2,612	15,424
		RVU Sum Technical Fis..	5,307	4,824	5,830	5,874	5,140	5,634	32,609
Site K	Site K	Study Count	3,323	3,162	3,566	3,548	3,352	3,601	20,552
		RVU Sum Professional ..	3,385	3,406	3,848	3,908	3,633	3,939	22,118
		RVU Sum Technical Fis..	8,474	8,696	9,866	9,865	9,175	10,081	56,158
Site L	Site L	Study Count	8,376	7,328	8,576	8,841	8,057	8,662	49,840
		RVU Sum Professional ..	10,248	8,994	10,371	10,525	9,486	10,168	59,792
		RVU Sum Technical Fis..	20,043	17,324	20,514	21,081	19,600	20,264	118,826
Grand Total	Grand Total	Study Count	19,843	18,181	20,752	20,909	19,219	20,345	119,249
		RVU Sum Professional ..	21,264	19,781	22,330	22,639	20,699	22,028	128,742
		RVU Sum Technical Fis..	45,590	42,281	48,369	49,462	45,559	48,142	279,403



Hospital Insight Report - Health System Summary

January 2015 - June 2015



Your Shift Activity

Onsite: Mon-Fri 7am - 5pm and Sat 8am - 12pm

Midhawk: Mon-Fri 5pm - 12am

Deephawk: Mon-Fri 12am - 7am and Sat 12pm - Mon 7am

Facility Volumes and RVUs by Shift

			Jan	Feb	Mar	Apr	May	Jun	Grand Total
Deephawk	Site A	Study Count	39	38	52	29	65	51	274
		RVU Sum Professional ..	24	23	31	17	39	34	168
		RVU Sum Technical Fis..	56	66	70	42	96	84	415
Site B	Site B	Study Count	44	40	45	46	36	27	238
		RVU Sum Professional ..	19	18	19	25	22	11	115
		RVU Sum Technical Fis..	40	35	34	45	44	19	216
Site C	Site C	Study Count	119	139	110	109	148	153	778
		RVU Sum Professional ..	65	103	78	73	111	116	545
		RVU Sum Technical Fis..	118	195	141	132	200	208	992
Site D	Site D	Study Count	144	100	121	135	125	117	742
		RVU Sum Professional ..	105	79	69	90	101	76	519
		RVU Sum Technical Fis..	198	143	116	179	187	139	962
Site E	Site E	Study Count	166	189	158	171	191	157	1,032
		RVU Sum Professional ..	134	132	116	126	142	120	769
		RVU Sum Technical Fis..	263	241	228	238	269	238	1,478
Site F	Site F	Study Count	220	203	210	219	298	197	1,347
		RVU Sum Professional ..	183	177	184	179	211	187	1,121
		RVU Sum Technical Fis..	350	324	335	340	419	330	2,098
Site G	Site G	Study Count	270	309	318	295	340	255	1,787
		RVU Sum Professional ..	192	251	213	238	279	221	1,394
		RVU Sum Technical Fis..	366	491	393	476	542	441	2,708
Site H	Site H	Study Count	238	199	304	213	258	222	1,434
		RVU Sum Professional ..	201	170	270	171	223	197	1,231
		RVU Sum Technical Fis..	421	344	547	343	455	386	2,497
Site I	Site I	Study Count	354	339	341	318	404	324	2,080
		RVU Sum Professional ..	279	283	272	255	317	285	1,691
		RVU Sum Technical Fis..	532	524	497	492	612	549	3,206
Site J	Site J	Study Count	181	189	229	218	238	288	1,343
		RVU Sum Professional ..	142	142	150	118	184	263	999
		RVU Sum Technical Fis..	273	272	301	235	368	534	1,983
Site K	Site K	Study Count	987	860	963	842	1,022	931	5,605
		RVU Sum Professional ..	676	591	649	574	779	721	3,991
		RVU Sum Technical Fis..	1,262	1,140	1,220	1,092	1,511	1,391	7,616
Site L	Site L	Study Count	3,278	2,819	3,075	3,000	3,711	3,096	18,979
		RVU Sum Professional ..	2,973	2,591	2,871	2,757	3,475	2,915	17,583
		RVU Sum Technical Fis..	6,666	5,845	6,476	6,184	8,144	6,492	39,807
Grand Total	Grand Total	Study Count	6,040	5,424	5,926	5,595	6,836	5,818	35,639
		RVU Sum Professional ..	4,994	4,561	4,922	4,622	5,881	5,146	30,126
		RVU Sum Technical Fis..	10,546	9,621	10,357	9,797	12,846	10,812	63,979



Hospital Insight Report - Health System Summary

January 2015 - June 2015



Your Shift Activity

Onsite: Mon-Fri 7am - 5pm and Sat 8am - 12pm

Midhawk: Mon-Fri 5pm - 12am

Deephawk: Mon-Fri 12am - 7am and Sat 12pm - Mon 7am

Facility Volumes and RVUs by Shift

			Jan	Feb	Mar	Apr	May	Jun	Grand Total
Midhawk	Site A	Study Count	1	2			1		4
		RVU Sum Professional ..	0	1			0		2
		RVU Sum Technical Fis..	0	3			0		4
Site B	Site B	Study Count	11	17	10	15	19	12	84
		RVU Sum Professional ..	12	22	11	29	13	14	102
		RVU Sum Technical Fis..	32	54	37	36	24	29	211
Site C	Site C	Study Count	77	67	72	127	90	80	513
		RVU Sum Professional ..	48	38	47	95	52	54	334
		RVU Sum Technical Fis..	87	69	91	177	103	98	626
Site D	Site D	Study Count	85	97	78	82	68	109	519
		RVU Sum Professional ..	71	80	53	50	48	81	383
		RVU Sum Technical Fis..	144	154	96	97	93	163	747
Site E	Site E	Study Count	135	111	139	114	110	111	720
		RVU Sum Professional ..	108	92	105	96	97	97	595
		RVU Sum Technical Fis..	208	180	221	191	199	185	1,184
Site F	Site F	Study Count	152	145	182	222	191	165	1,057
		RVU Sum Professional ..	109	113	130	152	150	139	793
		RVU Sum Technical Fis..	211	214	245	289	287	254	1,500
Site G	Site G	Study Count	155	151	167	191	186	170	1,020
		RVU Sum Professional ..	123	109	131	151	158	127	799
		RVU Sum Technical Fis..	239	213	242	343	313	255	1,605
Site H	Site H	Study Count	143	142	175	190	159	159	968
		RVU Sum Professional ..	144	147	192	191	161	161	995
		RVU Sum Technical Fis..	300	298	403	392	318	338	2,049
Site I	Site I	Study Count	248	204	250	274	249	232	1,457
		RVU Sum Professional ..	203	175	215	237	213	198	1,240
		RVU Sum Technical Fis..	399	333	424	472	427	381	2,437
Site J	Site J	Study Count	159	140	146	157	185	188	975
		RVU Sum Professional ..	107	98	111	78	128	160	682
		RVU Sum Technical Fis..	211	196	230	156	263	323	1,378
Site K	Site K	Study Count	516	383	517	483	433	575	2,907
		RVU Sum Professional ..	413	316	376	391	385	498	2,379
		RVU Sum Technical Fis..	797	588	713	769	826	988	4,680
Site L	Site L	Study Count	1,361	1,194	1,509	1,511	1,430	1,492	8,497
		RVU Sum Professional ..	1,488	1,312	1,584	1,642	1,532	1,605	9,164
		RVU Sum Technical Fis..	3,404	2,999	3,516	3,766	3,463	3,545	20,692
Grand Total	Grand Total	Study Count	3,043	2,653	3,245	3,366	3,121	3,293	18,721
		RVU Sum Professional ..	2,827	2,502	2,955	3,111	2,938	3,136	17,468
		RVU Sum Technical Fis..	6,033	5,302	6,217	6,688	6,316	6,559	37,114



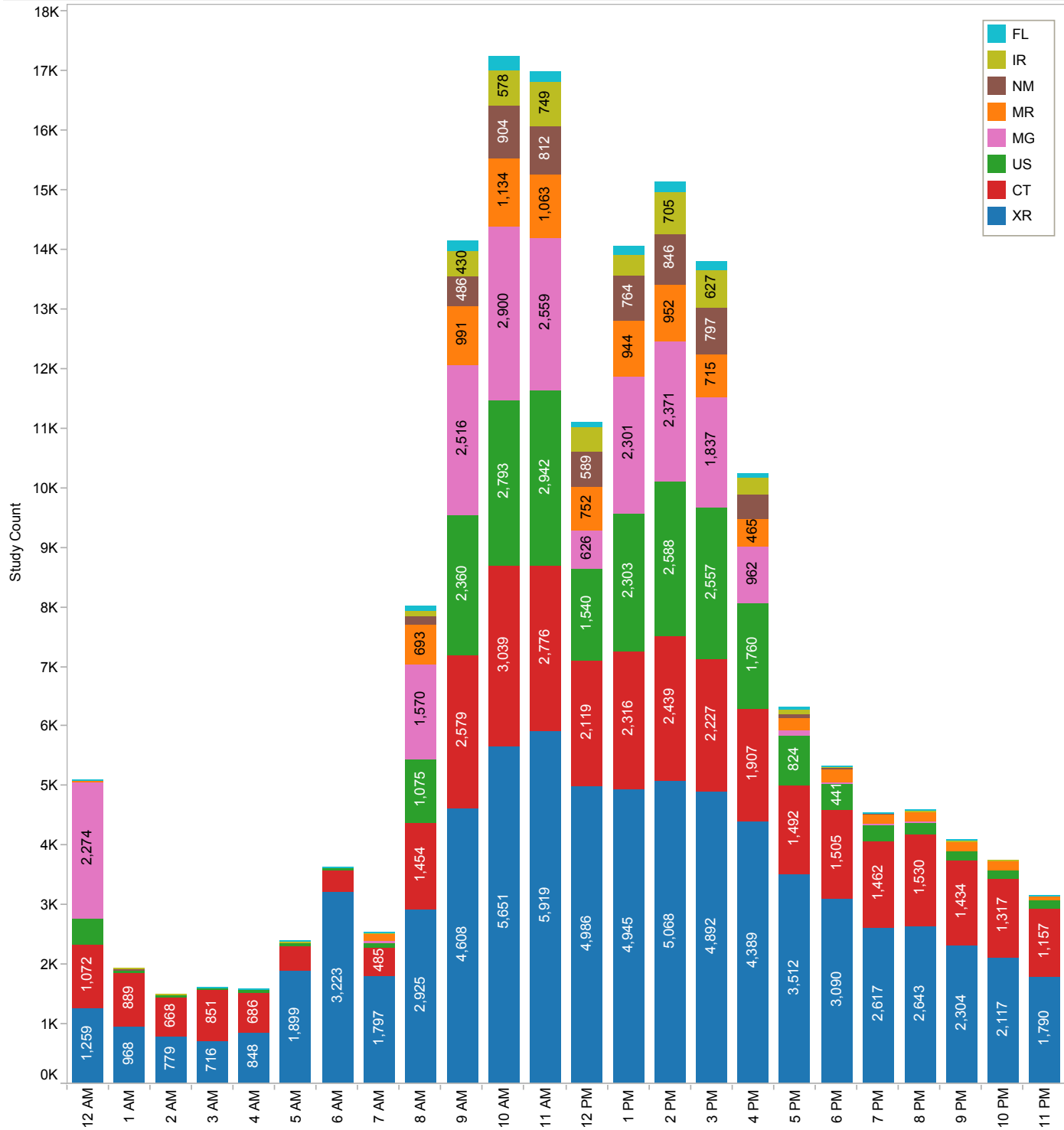
Hospital Insight Report - Health System Summary

January 2015 - June 2015



Your Scanning Activity

Modality Volumes by Exam Time of Day - YTD





Hospital Insight Report - Health System Summary

January 2015 - June 2015



Your Patient Class Information

		Patient Class Mix by Facility							
		Jan	Feb	Mar	Apr	May	Jun	Grand Total	
Emergency	Site C	326	324	327	369	370	353	2,069	
	Site D	391	328	353	399	361	351	2,183	
	Site E	550	490	477	462	516	503	2,998	
	Site F	617	620	637	661	644	628	3,807	
	Site G	725	736	780	790	854	742	4,627	
	Site H	607	540	682	660	682	597	3,768	
	Site I	937	859	909	963	970	965	5,603	
	Site J	670	618	665	680	720	829	4,182	
	Site K	1,915	1,745	1,990	1,891	2,009	2,139	11,689	
	Site L	3,771	3,367	3,948	3,990	4,377	3,919	23,372	
	Total	10,509	9,627	10,768	10,865	11,503	11,026	64,298	
Inpatient	Site A	72	78	72	50	105	80	457	
	Site B	131	126	122	140	115	99	733	
	Site C	19	24	13	17	12	21	106	
	Site D	41	71	90	38	23	30	293	
	Site E	18	32	29	36	14	14	143	
	Site F	51	53	55	37	46	48	290	
	Site G	94	106	123	136	123	120	702	
	Site H	115	118	125	83	79	117	637	
	Site I	252	189	161	180	162	145	1,089	
	Site J	85	63	100	93	83	70	494	
	Site K	881	595	755	649	630	710	4,220	
	Site L	3,883	3,237	3,695	3,549	3,705	3,611	21,680	
		Total	5,642	4,692	5,340	5,008	5,097	5,065	30,844
Outpatient	Site C	141	116	141	137	126	128	789	
	Site D	368	341	333	322	212	142	1,718	
	Site E	222	247	286	274	242	278	1,549	
	Site F	577	520	546	602	518	560	3,323	
	Site G	506	486	551	587	550	622	3,302	
	Site H	958	906	1,075	922	973	828	5,662	
	Site I	1,091	1,005	1,180	1,146	1,097	1,064	6,583	
	Site J	1,205	1,173	1,515	1,451	1,217	1,315	7,876	
	Site K	1,766	1,832	2,062	2,087	1,887	2,010	11,644	
	Site L	5,093	4,452	5,218	5,483	4,835	5,432	30,513	
		Total	11,927	11,078	12,907	13,011	11,657	12,379	72,959
	-	Site B			1				1
		Site C				1			1
	Site D	5	5	3	1	3	13	30	
	Site E	21	12	13	12	5	6	69	
	Site F	7	8	7	3	5	8	38	
	Site G		3	7	27	10	6	53	
	Site H	26	20	9	31	16	129	231	
	Site I	20	22	49	41	47	31	210	
	Site J	237	273	281	294	271	257	1,613	
	Site K	264	233	239	246	281	249	1,512	
	Site L	268	285	299	330	281	289	1,752	
	Total	848	861	908	986	919	988	5,510	
Grand Total		28,926	26,258	29,923	29,870	29,176	29,458	173,611	



Hospital Insight Report - Health System Summary

January 2015 - June 2015



Your Radiologist Productivity

		Radiologist Productivity						
		Jan	Feb	Mar	Apr	May	Jun	Grand Total
Radiologist A	Study Count	1,548	791	990	1,021	988	1,070	6,408
	RVU Sum Professional Produ..	1,172	739	1,041	1,187	1,081	1,146	6,367
	Avg. Prof RVU/Study Ratio	0.76	0.93	1.05	1.16	1.09	1.07	1.01
Radiologist B	Study Count	2,716	2,444	2,768	2,176	2,259	3,095	15,458
	RVU Sum Professional Produ..	1,845	1,662	1,888	1,493	1,534	2,077	10,499
	Avg. Prof RVU/Study Ratio	0.68	0.68	0.68	0.69	0.68	0.67	0.68
Radiologist C	Study Count	1,618	179	894	245	345	600	3,881
	RVU Sum Professional Produ..	1,663	173	835	220	382	551	3,824
	Avg. Prof RVU/Study Ratio	1.03	0.97	0.93	0.90	1.11	0.92	0.98
Radiologist D	Study Count		1	66	421	37	94	619
	RVU Sum Professional Produ..		0	39	270	29	60	398
	Avg. Prof RVU/Study Ratio		0.26	0.59	0.64	0.78	0.63	0.58
Radiologist E	Study Count	112	910	838	1,058	1,316	36	4,270
	RVU Sum Professional Produ..	85	783	658	852	1,108	36	3,522
	Avg. Prof RVU/Study Ratio	0.76	0.86	0.79	0.81	0.84	0.99	0.84
Radiologist F	Study Count	1,227	660	537	506	371	890	4,191
	RVU Sum Professional Produ..	1,105	494	496	465	319	822	3,701
	Avg. Prof RVU/Study Ratio	0.90	0.75	0.92	0.92	0.86	0.92	0.88
Radiologist G	Study Count	1,776	1,646	2,129	1,609	1,559	1,427	10,146
	RVU Sum Professional Produ..	1,392	1,340	1,515	1,298	1,292	1,108	7,945
	Avg. Prof RVU/Study Ratio	0.78	0.81	0.71	0.81	0.83	0.78	0.79
Radiologist H	Study Count	19	10	12	14	5	11	71
	RVU Sum Professional Produ..	41	28	20	41	12	23	166
	Avg. Prof RVU/Study Ratio	2.16	2.83	1.68	2.92	2.36	2.13	2.35
Radiologist I	Study Count	107	74	85	133	87	125	611
	RVU Sum Professional Produ..	194	141	156	250	161	225	1,128
	Avg. Prof RVU/Study Ratio	1.81	1.91	1.84	1.88	1.85	1.80	1.85
Radiologist J	Study Count	236	250	343	295	30		1,154
	RVU Sum Professional Produ..	575	656	887	788	71		2,977
	Avg. Prof RVU/Study Ratio	2.44	2.63	2.58	2.67	2.38		2.54
Radiologist K	Study Count	520	997	543	2,031	1,966	1,790	7,847
	RVU Sum Professional Produ..	499	1,028	589	2,040	1,991	1,728	7,874
	Avg. Prof RVU/Study Ratio	0.96	1.03	1.08	1.00	1.01	0.97	1.01
Radiologist L	Study Count	53	39	69	65	22	47	295
	RVU Sum Professional Produ..	148	121	201	180	63	132	846
	Avg. Prof RVU/Study Ratio	2.80	3.11	2.92	2.77	2.88	2.80	2.88
Radiologist M	Study Count	609	535	1,707	961	513	316	4,641
	RVU Sum Professional Produ..	603	496	1,773	911	447	278	4,507
	Avg. Prof RVU/Study Ratio	0.99	0.93	1.04	0.95	0.87	0.88	0.94



Hospital Insight Report - Health System Summary

January 2015 - June 2015



Your Radiologist Productivity

		Radiologist Productivity						
		Jan	Feb	Mar	Apr	May	Jun	Grand Total
Radiologist N	Study Count	232	214	265	271	252	238	1,472
	RVU Sum Professional Produ..	452	405	512	523	478	437	2,808
	Avg. Prof RVU/Study Ratio	1.95	1.89	1.93	1.93	1.90	1.84	1.91
Radiologist O	Study Count	12	12	18	17	12	9	80
	RVU Sum Professional Produ..	25	21	29	29	20	19	143
	Avg. Prof RVU/Study Ratio	2.07	1.73	1.61	1.68	1.67	2.16	1.82
Radiologist P	Study Count	1,193	828	778	67	527	1,060	4,453
	RVU Sum Professional Produ..	975	642	601	45	393	845	3,502
	Avg. Prof RVU/Study Ratio	0.82	0.78	0.77	0.68	0.74	0.80	0.76
Radiologist Q	Study Count	31	16	18	38	24	33	160
	RVU Sum Professional Produ..	68	39	35	91	52	78	364
	Avg. Prof RVU/Study Ratio	2.19	2.47	1.96	2.40	2.16	2.37	2.26
Radiologist R	Study Count	231	216	225	231	11	16	930
	RVU Sum Professional Produ..	169	167	161	162	10	7	677
	Avg. Prof RVU/Study Ratio	0.73	0.77	0.72	0.70	0.89	0.47	0.71
Radiologist S	Study Count	93	475	1,012	1,576	1,359	1,056	5,571
	RVU Sum Professional Produ..	111	525	1,028	1,619	1,329	835	5,446
	Avg. Prof RVU/Study Ratio	1.19	1.10	1.02	1.03	0.98	0.79	1.02
Radiologist T	Study Count	203	156	187	195	206	211	1,158
	RVU Sum Professional Produ..	384	312	349	362	378	401	2,185
	Avg. Prof RVU/Study Ratio	1.89	2.00	1.86	1.86	1.84	1.90	1.89
Radiologist U	Study Count	37	33	42	33	36	25	206
	RVU Sum Professional Produ..	76	66	88	68	75	50	422
	Avg. Prof RVU/Study Ratio	2.04	2.00	2.10	2.06	2.08	1.98	2.04
Radiologist V	Study Count	302	98	338	1,053	713	246	2,750
	RVU Sum Professional Produ..	166	53	185	621	453	175	1,653
	Avg. Prof RVU/Study Ratio	0.55	0.55	0.55	0.59	0.63	0.71	0.60
Radiologist W	Study Count	169	161	168	250	140	185	1,073
	RVU Sum Professional Produ..	317	314	313	491	268	343	2,047
	Avg. Prof RVU/Study Ratio	1.88	1.95	1.86	1.97	1.92	1.85	1.90
Radiologist X	Study Count	1,270	983	931	774	593	2,078	6,629
	RVU Sum Professional Produ..	1,455	998	908	723	364	1,911	6,359
	Avg. Prof RVU/Study Ratio	1.15	1.01	0.98	0.93	0.61	0.92	0.93
Radiologist Y	Study Count	340	373	597	143	193	12	1,658
	RVU Sum Professional Produ..	246	257	410	105	132	7	1,155
	Avg. Prof RVU/Study Ratio	0.72	0.69	0.69	0.74	0.68	0.56	0.68
Radiologist Z	Study Count	149	184	201	211	156	190	1,091
	RVU Sum Professional Produ..	300	375	417	436	315	368	2,212
	Avg. Prof RVU/Study Ratio	2.02	2.04	2.08	2.07	2.02	1.93	2.03



Hospital Insight Report - Health System Summary

January 2015 - June 2015



Your Referring Physician Activity

Top Referring Physicians							
	Jan	Feb	Mar	Apr	May	Jun	Grand Total
Referring Physician A	430	329	347	453	385	447	2,391
Referring Physician B	363	315	503	332	386	381	2,280
Referring Physician C	426	308	323	384	349	368	2,158
Referring Physician D	327	273	396	328	396	351	2,071
Referring Physician E	285	236	237	420	357	436	1,971
Referring Physician F	301	305	330	271	357	378	1,942
Referring Physician G	334	235	342	348	373	303	1,935
Referring Physician H	337	266	298	342	362	259	1,864
Referring Physician I	300	245	341	271	338	359	1,854
Referring Physician J	251	227	322	335	412	302	1,849
Referring Physician K	295	296	335	295	296	309	1,826
Referring Physician L	269	212	308	350	284	310	1,733
Referring Physician M	305	294	258	233	274	335	1,699
Referring Physician N	307	220	281	193	271	360	1,632
Referring Physician O	256	257	357	302	183	220	1,575
Referring Physician P	217	215	298	239	206	221	1,396
Referring Physician Q	230	254	241	199	237	234	1,395
Referring Physician R	183	198	183	265	257	269	1,355
Referring Physician S	216	127	247	215	242	233	1,280
Referring Physician T	204	212	254	203	202	151	1,226
Referring Physician U	273	244	263	233	102	12	1,127
Referring Physician V	164	188	198	202	174	194	1,120
Referring Physician W	188	160	225	149	173	200	1,095
Referring Physician X	166	154	177	199	198	187	1,081
Referring Physician Y	169	184	167	176	164	190	1,050
Referring Physician Z	161	144	185	213	153	181	1,037