



---

Enabling better decisions for the health of patients and  
the practice of radiology

---

vRad Analytics: Hospital Insight Report - Facility Summary  
prepared exclusively for:

## Acme Hospital

Your vRad Account Manager: James Dean  
Contact Information: 800.532.7424

---

### ABOUT YOUR HOSPITAL INSIGHT REPORT:

This report was created exclusively for your organization. It provides a year-to-date monthly rolling snapshot of your imaging activity. It is an example of the type of unique information available from partnering with vRad.

Hospital Insight (HI) Reports provide a 24x7 look inside your imaging data by leveraging access to vRad's clinical data repository and our patent-pending data normalization solution. That means you'll receive a complete, consistent and integrated picture across all of your facilities, including findings-based metrics on all of your radiology studies using vRad's state-of-the-art NLP (natural language processing) tools.

Your personalized HI Report is a one important input to help make informed decisions based on facts to lower costs, improve quality and provide exceptional patient care. Your commitment to Final Interpretations with vRad now gives you the opportunity to *See Inside Your Data<sup>SM</sup>* – and turn information into action for your organization. It's a complimentary report delivered right to your email inbox each month—simply click the report link to unlock and explore your data.

Please let your vRad Account Manager know if you have any questions or comments to share.

Thank you for the trust you put in vRad every day.

For compliance and privacy purposes, QA data is not included in your Hospital Insight Report. **To access your specific facility(s) QA data, login to our client portal at: [access.vrad.com](https://access.vrad.com).**

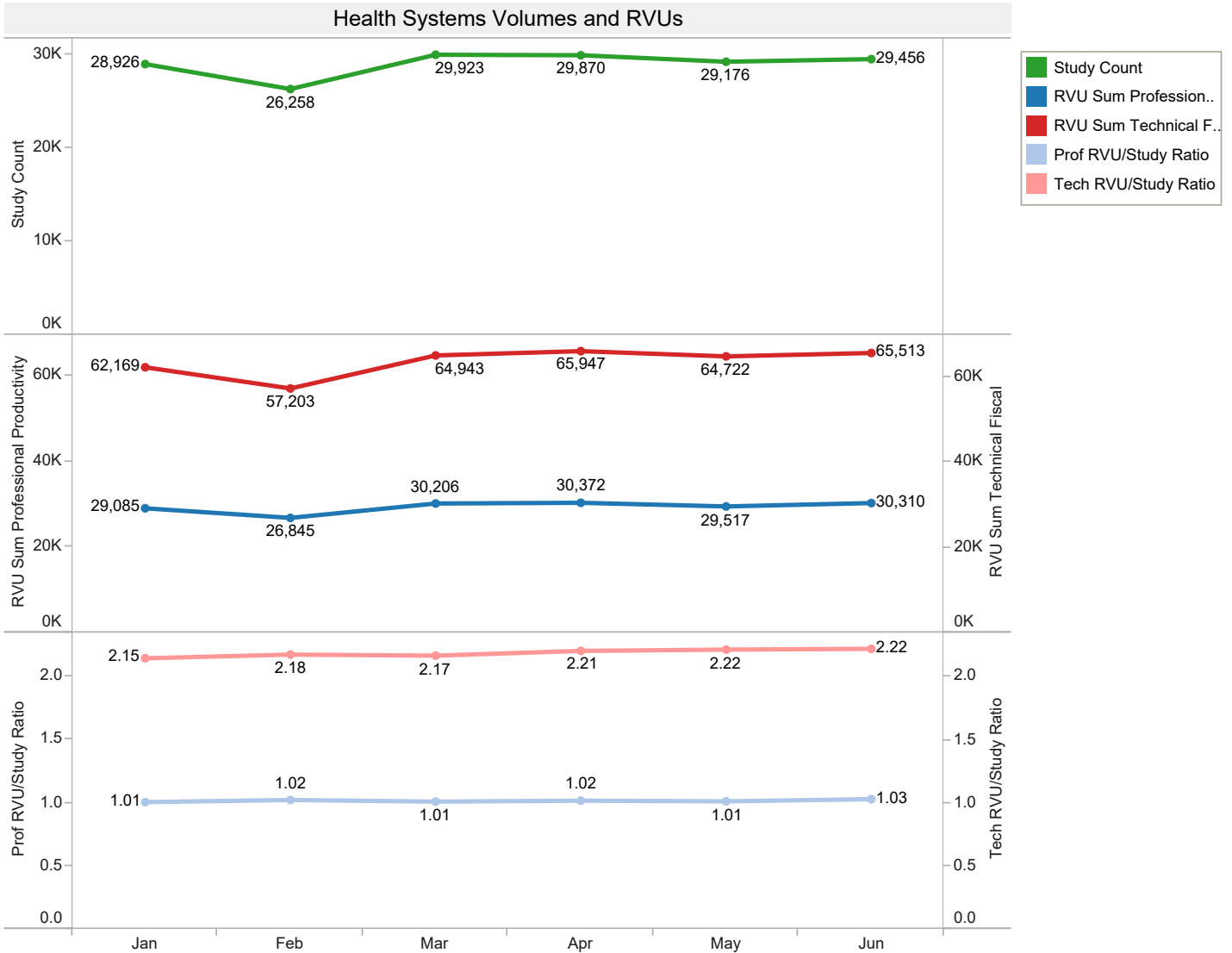


# Hospital Insight Report - Health System Summary

## January 2015 - June 2015



### Imaging Activity



Health System Volumes and RVUs							Grand Total	% Change Current Month from Previous Month
Jan	Feb	Mar	Apr	May	Jun			
Study Count	28,926	26,258	29,923	29,870	29,176	29,456	173,609	0.96%
RVU Sum Professional Productivity	29,085	26,845	30,206	30,372	29,517	30,310	176,335	2.69%
RVU Sum Technical Fiscal	62,169	57,203	64,943	65,947	64,722	65,513	380,497	1.22%
Avg. Prof RVU/Study Ratio	1.01	1.02	1.01	1.02	1.01	1.03	1.02	1.71%
Avg. Tech RVU/Study Ratio	2.15	2.18	2.17	2.21	2.22	2.22	2.19	0.26%

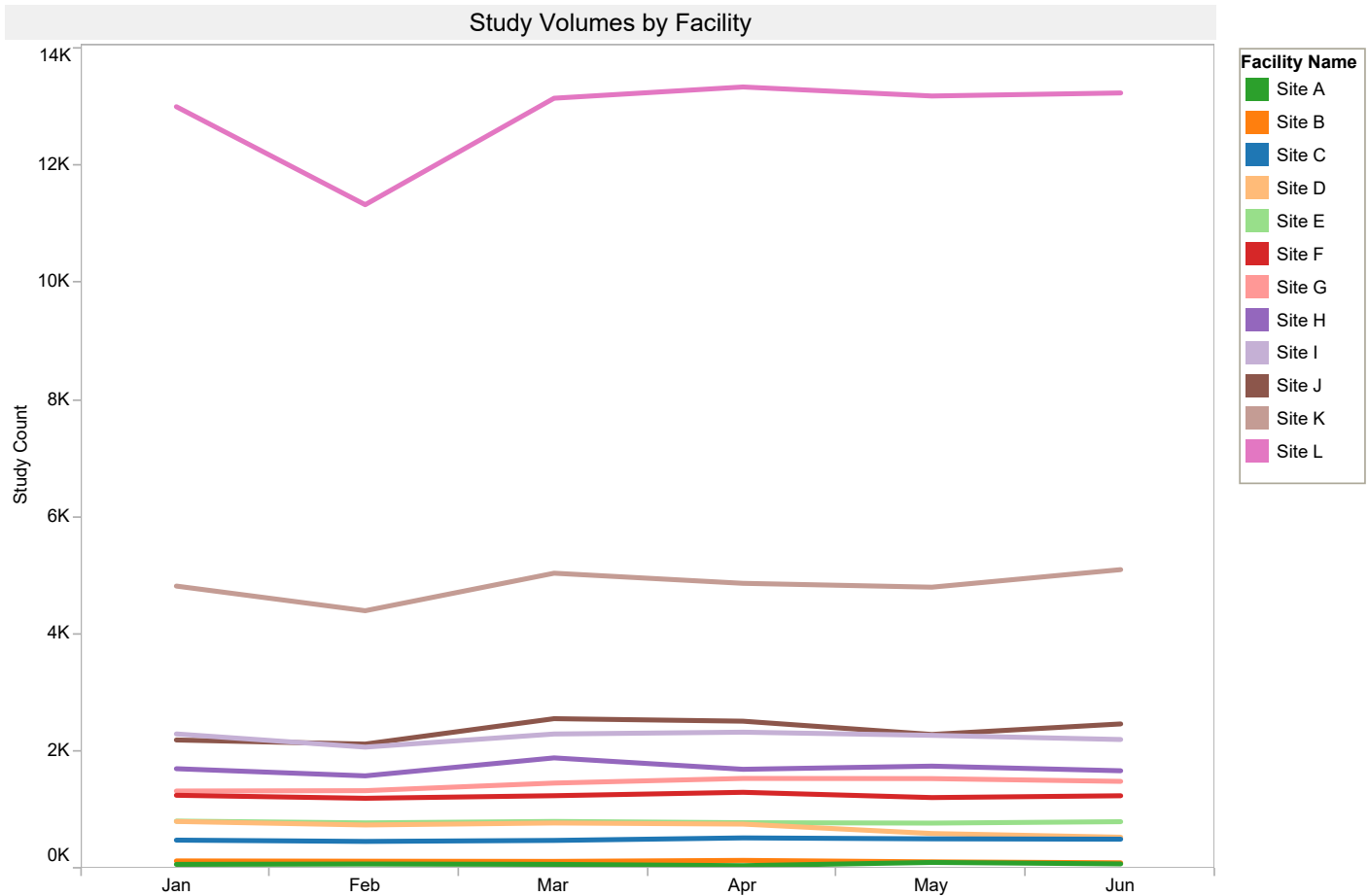


# Hospital Insight Report - Health System Summary

January 2015 - June 2015



## Study Volumes



Facility Name	Apr	Jan	Feb	Mar	May	Jun	Grand Total	% Change Current Month from Previous Month
Site L	13,352	13,015	11,341	13,160	13,198	13,250	77,316	0.39%
Site K	4,873	4,826	4,405	5,046	4,807	5,107	29,064	6.24%
Site J	2,518	2,197	2,127	2,561	2,291	2,471	14,165	7.86%
Site I	2,330	2,300	2,075	2,299	2,276	2,205	13,485	-3.12%
Site H	1,696	1,706	1,584	1,891	1,750	1,671	10,298	-4.51%
Site G	1,540	1,325	1,331	1,461	1,537	1,490	8,684	-3.06%
Site F	1,303	1,252	1,201	1,245	1,213	1,244	7,458	2.56%
Site E	784	811	781	805	777	801	4,759	3.09%
Site D	760	805	745	779	599	536	4,224	-10.52%
Site C	524	486	464	481	508	502	2,965	-1.18%
Site B	140	131	126	123	115	99	734	-13.91%
Site A	50	72	78	72	105	80	457	-23.81%
<b>Grand Total</b>	<b>29,870</b>	<b>28,926</b>	<b>26,258</b>	<b>29,923</b>	<b>29,176</b>	<b>29,456</b>	<b>173,609</b>	<b>0.96%</b>

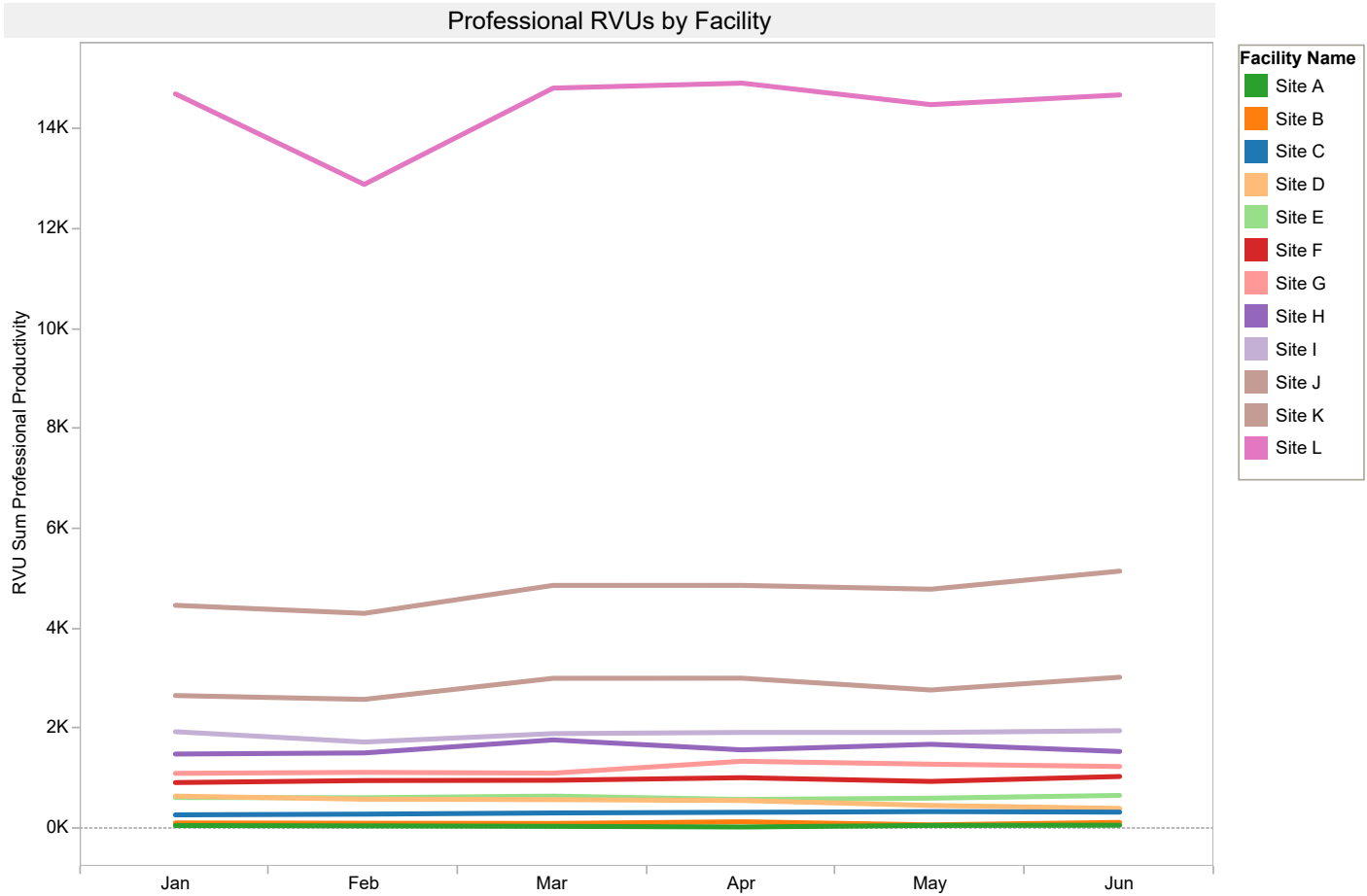


# Hospital Insight Report - Health System Summary

January 2015 - June 2015



## Professional RVUs



Facility Name	Jan	Feb	Mar	Apr	May	Jun	Grand Total	% Change Current Month from Previous Month
Site L	14,710	12,898	14,825	14,924	14,494	14,688	86,539	1.34%
Site K	4,474	4,313	4,873	4,873	4,797	5,158	28,489	7.53%
Site J	2,668	2,591	3,013	3,016	2,780	3,035	17,104	9.19%
Site I	1,944	1,738	1,907	1,930	1,929	1,965	11,413	1.82%
Site H	1,498	1,520	1,781	1,581	1,693	1,549	9,622	-8.52%
Site G	1,112	1,131	1,115	1,353	1,295	1,248	7,254	-3.59%
Site F	927	967	973	1,024	950	1,049	5,889	10.40%
Site E	629	624	656	589	615	670	3,782	8.99%
Site D	656	595	585	568	469	409	3,281	-12.81%
Site C	281	295	319	332	346	336	1,908	-2.90%
Site B	119	113	108	142	81	130	693	60.84%
Site A	67	61	51	38	69	74	360	6.65%
<b>Grand Total</b>	<b>29,085</b>	<b>26,845</b>	<b>30,206</b>	<b>30,372</b>	<b>29,517</b>	<b>30,310</b>	<b>176,335</b>	<b>2.69%</b>

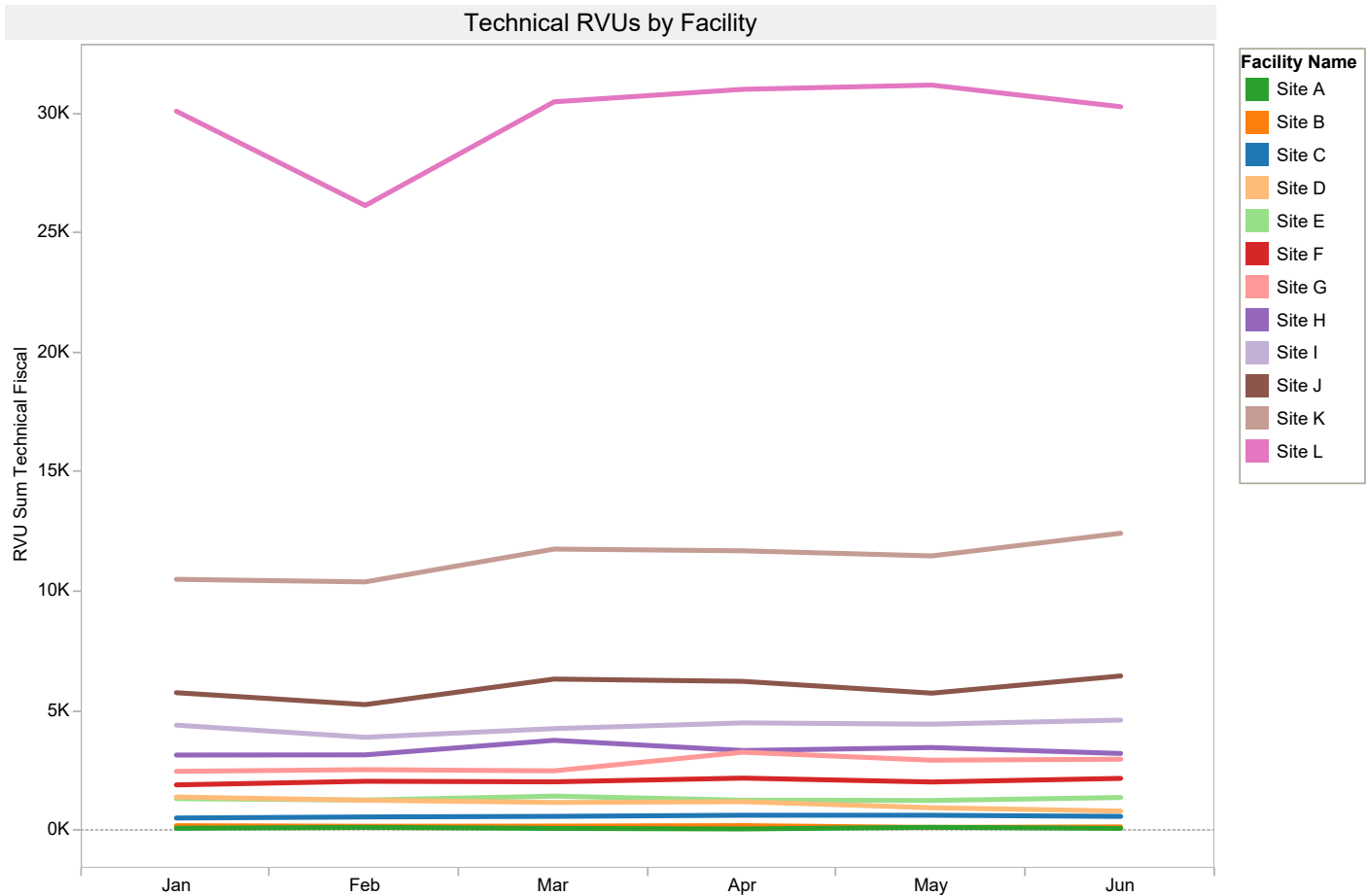


# Hospital Insight Report - Health System Summary

January 2015 - June 2015



## Technical RVUs



Facility Name	Jan	Feb	Mar	Apr	May	Jun	Grand Total	% Change Current Month from Previous Month
Site L	30,113	26,168	30,506	31,030	31,207	30,301	179,326	-2.90%
Site K	10,533	10,425	11,799	11,725	11,513	12,460	68,454	8.23%
Site J	5,790	5,292	6,361	6,265	5,771	6,491	35,971	12.47%
Site I	4,433	3,925	4,288	4,526	4,474	4,645	26,292	3.83%
Site H	3,183	3,190	3,799	3,371	3,497	3,248	20,288	-7.12%
Site G	2,501	2,572	2,522	3,300	2,967	3,007	16,868	1.36%
Site F	1,935	2,085	2,062	2,218	2,055	2,206	12,561	7.36%
Site E	1,358	1,300	1,464	1,294	1,282	1,407	8,104	9.79%
Site D	1,427	1,293	1,200	1,231	979	838	6,968	-14.44%
Site C	549	593	618	665	663	616	3,704	-7.07%
Site B	228	203	211	230	154	178	1,203	15.69%
Site A	119	157	114	92	160	115	757	-28.11%
<b>Grand Total</b>	<b>62,169</b>	<b>57,203</b>	<b>64,943</b>	<b>65,947</b>	<b>64,722</b>	<b>65,513</b>	<b>380,497</b>	<b>1.22%</b>

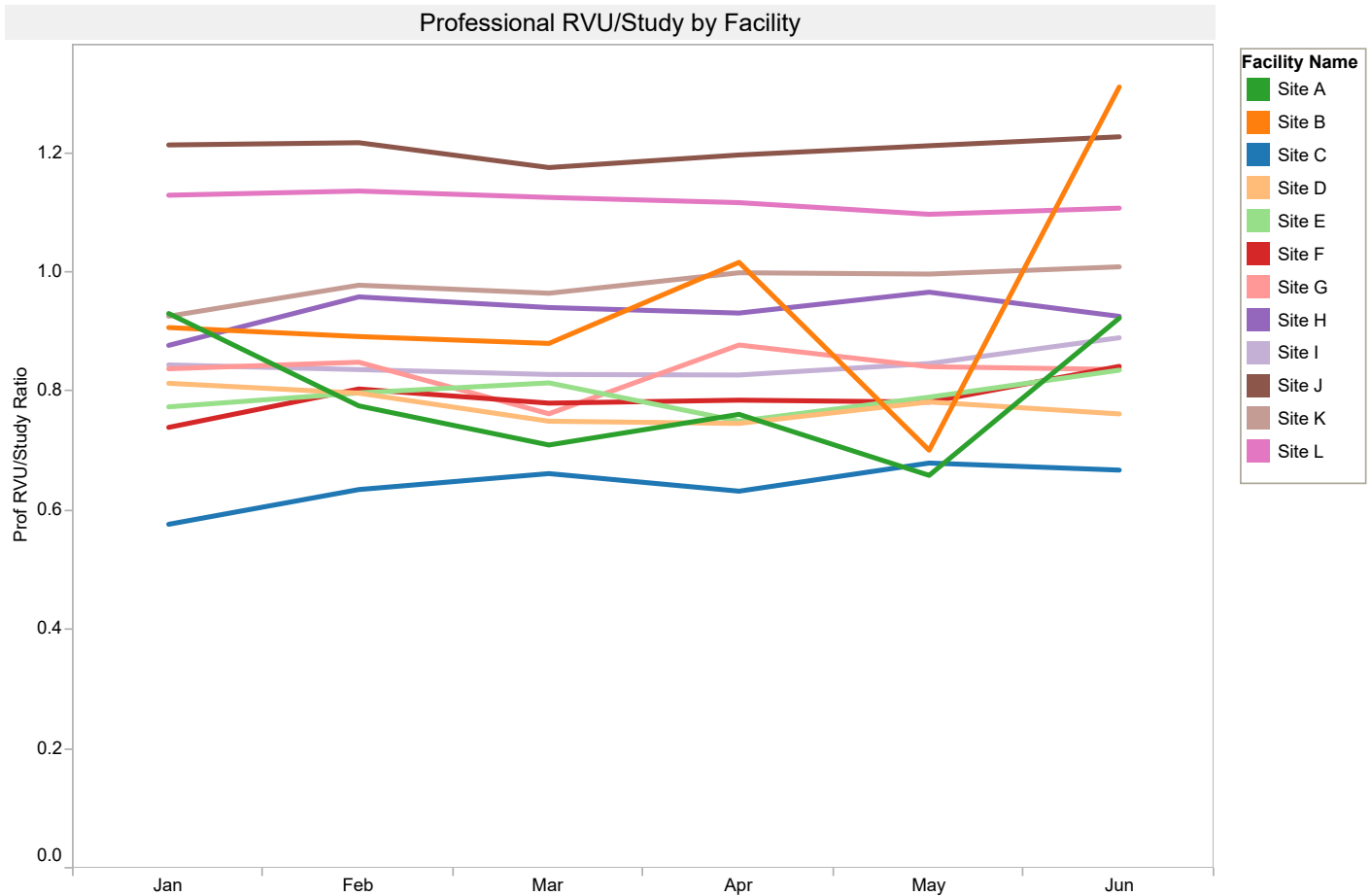


# Hospital Insight Report - Health System Summary

January 2015 - June 2015



## Professional RVU/Study



Facility Name	Jan	Feb	Mar	Apr	May	Jun	Grand Total	% Change Current Month from Previous Month
Site L	1.13	1.14	1.13	1.12	1.10	1.11	1.12	0.94%
Site K	0.93	0.98	0.97	1.00	1.00	1.01	0.98	1.21%
Site J	1.21	1.22	1.18	1.20	1.21	1.23	1.21	1.24%
Site I	0.85	0.84	0.83	0.83	0.85	0.89	0.85	5.10%
Site H	0.88	0.96	0.94	0.93	0.97	0.93	0.93	-4.19%
Site G	0.84	0.85	0.76	0.88	0.84	0.84	0.84	-0.55%
Site F	0.74	0.80	0.78	0.79	0.78	0.84	0.79	7.65%
Site E	0.78	0.80	0.82	0.75	0.79	0.84	0.79	5.73%
Site D	0.81	0.80	0.75	0.75	0.78	0.76	0.78	-2.56%
Site C	0.58	0.64	0.66	0.63	0.68	0.67	0.64	-1.74%
Site B	0.91	0.89	0.88	1.02	0.70	1.31	0.95	86.84%
Site A	0.93	0.78	0.71	0.76	0.66	0.92	0.79	39.98%
<b>Grand Total</b>	<b>0.88</b>	<b>0.89</b>	<b>0.87</b>	<b>0.89</b>	<b>0.86</b>	<b>0.95</b>	<b>0.89</b>	<b>9.48%</b>

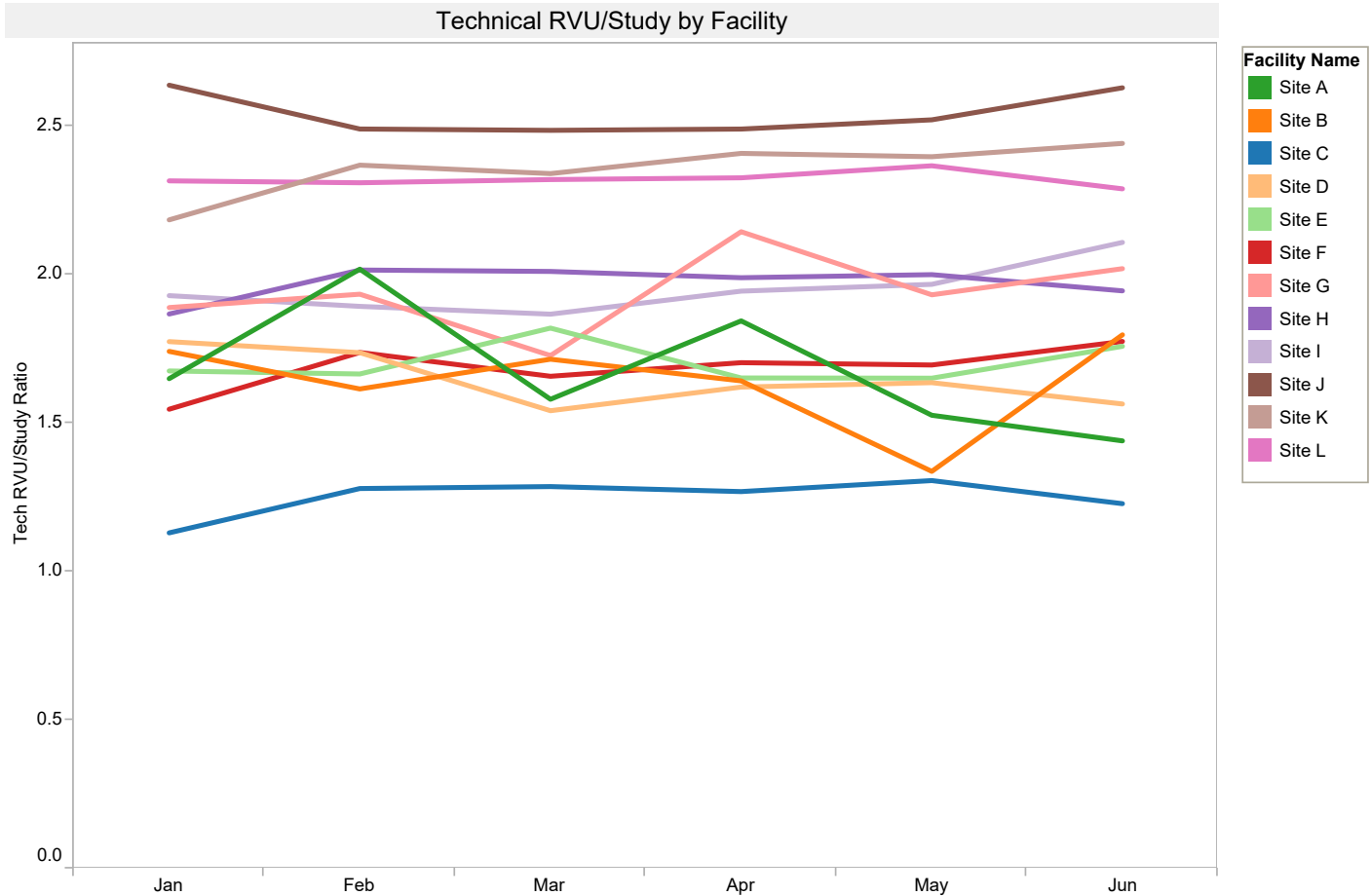


# Hospital Insight Report - Health System Summary

January 2015 - June 2015



## Technical RVU/Study



Facility Name	Jan	Feb	Mar	Apr	May	Jun	Grand Total	% Change Current Month from Previous Month
Site L	2.31	2.31	2.32	2.32	2.36	2.29	2.32	-3.28%
Site K	2.18	2.37	2.34	2.41	2.39	2.44	2.35	1.87%
Site J	2.64	2.49	2.48	2.49	2.52	2.63	2.54	4.28%
Site I	1.93	1.89	1.87	1.94	1.97	2.11	1.95	7.18%
Site H	1.87	2.01	2.01	1.99	2.00	1.94	1.97	-2.73%
Site G	1.89	1.93	1.73	2.14	1.93	2.02	1.94	4.56%
Site F	1.55	1.74	1.66	1.70	1.69	1.77	1.68	4.68%
Site E	1.67	1.66	1.82	1.65	1.65	1.76	1.70	6.50%
Site D	1.77	1.74	1.54	1.62	1.63	1.56	1.64	-4.39%
Site C	1.13	1.28	1.29	1.27	1.31	1.23	1.25	-5.95%
Site B	1.74	1.61	1.71	1.64	1.34	1.80	1.64	34.39%
Site A	1.65	2.02	1.58	1.84	1.53	1.44	1.68	-5.65%
<b>Grand Total</b>	1.86	1.92	1.86	1.92	1.86	1.91	1.89	2.96%

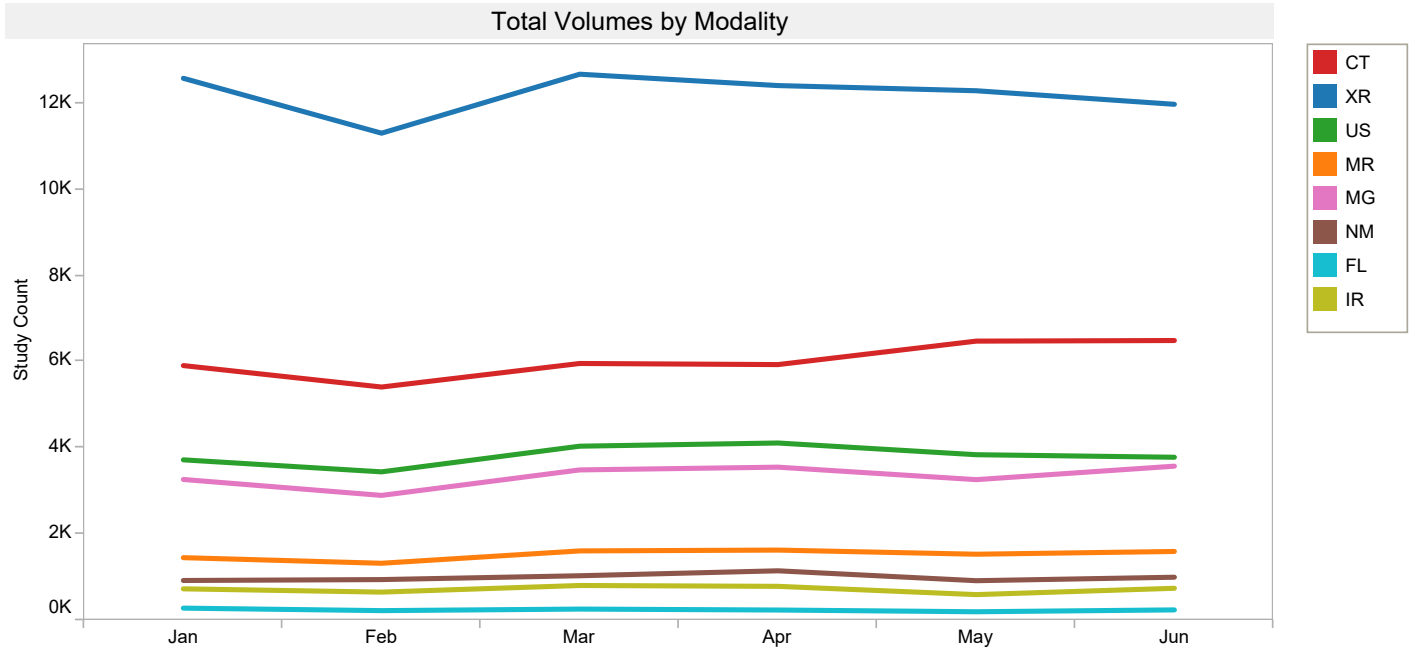


# Hospital Insight Report - Health System Summary

## January 2015 - June 2015



### Modality Volumes



		Jan	Feb	Mar	Apr	May	Jun	Grand Total	% Change Current Month from Previous Month
CT	Site L	2,809	2,342	2,726	2,707	3,011	2,830	16,425	-6.01%
	Site K	976	1,007	1,096	1,119	1,169	1,287	6,654	10.09%
	Site J	278	219	249	227	291	372	1,636	27.84%
	Site I	471	440	449	478	498	507	2,843	1.81%
	Site H	298	296	381	324	351	336	1,986	-4.27%
	Site G	312	330	290	348	388	343	2,011	-11.60%
	Site F	267	297	286	299	278	339	1,766	21.94%
	Site E	216	207	193	164	194	211	1,185	8.76%
	Site D	167	150	144	132	136	113	842	-16.91%
	Site C	92	97	119	112	140	132	692	-5.71%
	Site B	20	19	21	25	17	18	120	5.88%
	Site A	10	14	11	4	11	10	60	-9.09%
MR	Site L	853	765	908	960	913	938	5,337	2.74%
	Site K	264	242	279	305	259	308	1,657	18.92%
	Site J	63	51	57	54	64	41	330	-35.94%
	Site I	100	97	131	99	109	123	659	12.84%
	Site H	57	59	89	69	74	61	409	-17.57%
	Site G	35	28	29	48	26	31	197	19.23%
	Site F	31	35	40	47	42	41	236	-2.38%
	Site E	15	26	37	16	30	36	160	20.00%
	Site D	28	19	33	23	16	14	133	-12.50%
	Site B	7	2	7	7	1	5	29	400.00%
	Site A	2	1	2	3	1	1	10	0.00%
	<b>Grand Total</b>		7,371	6,743	7,577	7,570	8,019	8,097	45,377





# Hospital Insight Report - Health System Summary

January 2015 - June 2015



## Modality Volumes

		Total Volumes by Modality						Grand Total	% Change Current Month from Previous Month
		Jan	Feb	Mar	Apr	May	Jun		
XR	Site L	4,478	4,056	4,535	4,486	4,603	4,499	26,657	-2.26%
	Site K	2,424	2,069	2,377	2,192	2,190	2,282	13,534	4.20%
	Site J	664	661	787	794	715	711	4,332	-0.56%
	Site I	1,265	1,160	1,243	1,249	1,236	1,087	7,240	-12.06%
	Site H	786	621	768	743	705	698	4,321	-0.99%
	Site G	711	701	797	757	819	756	4,541	-7.69%
	Site F	793	668	728	723	700	665	4,277	-5.00%
	Site E	506	481	492	510	482	482	2,953	0.00%
	Site D	469	423	490	468	352	346	2,548	-1.70%
	Site C	366	345	341	389	353	359	2,153	1.70%
	Site B	85	85	80	80	79	51	460	-35.44%
	Site A	41	43	45	28	65	48	270	-26.15%
	US	Site L	1,525	1,350	1,627	1,685	1,578	1,498	9,263
Site K		651	588	695	677	681	629	3,921	-7.64%
Site J		625	586	746	721	627	707	4,012	12.76%
Site I		251	209	236	237	227	263	1,423	15.86%
Site H		305	298	339	301	329	320	1,892	-2.74%
Site G		136	146	157	219	158	155	971	-1.90%
Site F		76	111	95	120	107	98	607	-8.41%
Site E		39	31	47	53	36	41	247	13.89%
Site D		79	85	65	59	56	43	387	-23.21%
Site C		19	20	19	21	14	11	104	-21.43%
Site B		7	10	7	11	11	9	55	-18.18%
Site A		14	14	11	14	22	13	88	-40.91%
MG		Site L	2,134	1,764	2,060	2,224	2,102	2,280	12,564
	Site K	352	344	430	396	366	450	2,338	22.95%
	Site J	172	194	264	208	172	170	1,180	-1.16%
	Site I	174	132	210	224	162	172	1,074	6.17%
	Site H	180	198	206	172	200	202	1,158	1.00%
	Site G	108	106	168	128	118	168	796	42.37%
	Site F	72	78	84	104	80	94	512	17.50%
	Site E	28	33	28	29	31	29	178	-6.45%
	Site D	51	52	43	72	36	15	269	-58.33%
	NM	Site L	350	335	417	445	345	348	2,240
Site K		96	99	105	109	96	109	614	13.54%
Site J		378	393	419	459	376	431	2,456	14.63%
Site I		39	36	28	43	41	51	238	24.39%
Site H		15	32	26	25	22	10	130	-54.55%
Site G		21	20	17	40	26	37	161	42.31%
Site F		5	10	10	9	6	7	47	16.67%
Site E		7	3	8	11	3	2	34	-33.33%
Site D		9	11	4	5	3	2	34	-33.33%
Site C		1	1		2			4	
Site B		3	2	1	2		2	10	
Site A	1	4			2	2	9	0.00%	
FL	Site L	203	167	167	161	151	193	1,042	27.81%
	Site K	45	35	50	50	26	29	235	11.54%
	Site J	5	8	9	10	4	3	39	-25.00%
	Site I		1	2		3	1	7	-66.67%
	Site H	20	8	25	10	7	8	78	14.29%
	Site G	1		2		1		4	-100.00%
	Site F	1	1					2	
	Site D						2	2	
	Site B	6	4	3	7	5	5	30	0.00%
	Site A	2	1	3	1	2	1	10	-50.00%
	IR	Site L	655	556	715	679	491	657	3,753
Site K		17	18	9	16	10	10	80	0.00%
Site J		11	14	28	43	40	33	169	-17.50%
Site H		40	60	52	44	51	29	276	-43.14%
Site G		1		1		1		3	-100.00%
Site D		1	2				1	4	
Site C		1						1	
Site B		3	4	4	7	2	9	29	350.00%
Site A		2	1			2	5	10	150.00%
<b>Grand Total</b>		21,525	19,488	22,325	22,272	21,128	21,338	128,076	0.99%



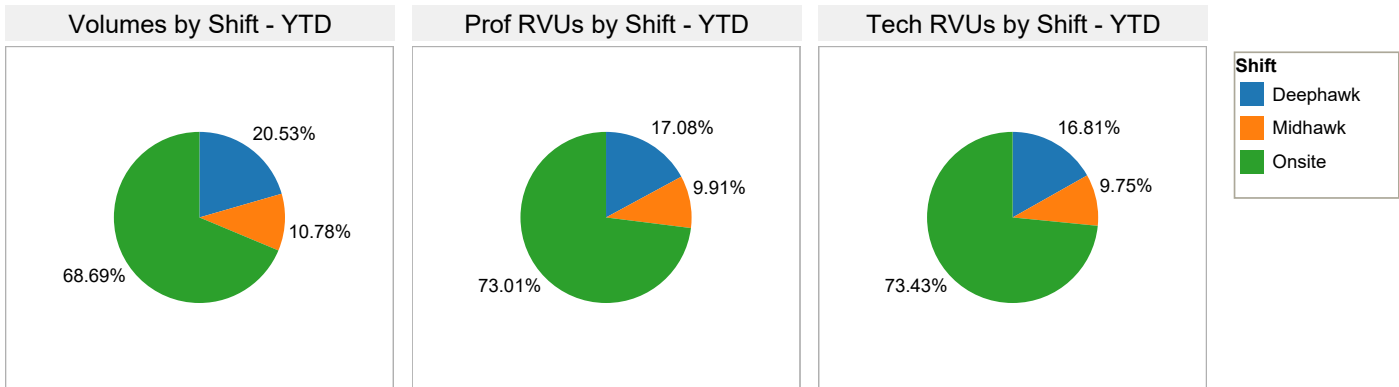
# Hospital Insight Report - Health System Summary

## January 2015 - June 2015



### Shift Activity

Onsite: Mon-Fri 7am - 5pm and Sat 8am - 12pm  
 Midhawk: Mon-Fri 5pm - 12am  
 Deephawk: Mon-Fri 12am - 7am and Sat 12pm - Mon 7am



		Total Volumes and RVUs by Shift						
	Hawk Shift	Jan	Feb	Mar	Apr	May	Jun	Grand Total
Study Count	Deephawk	6,040	5,424	5,926	5,595	6,836	5,818	35,639
	Midhawk	3,043	2,653	3,245	3,366	3,121	3,293	18,721
	Onsite	19,843	18,181	20,752	20,909	19,219	20,345	119,249
RVU Sum Professional Productivity	Deephawk	4,994	4,561	4,922	4,622	5,881	5,146	30,126
	Midhawk	2,827	2,502	2,955	3,111	2,938	3,136	17,468
	Onsite	21,264	19,781	22,330	22,639	20,699	22,028	128,742
RVU Sum Technical Fiscal	Deephawk	10,546	9,621	10,357	9,797	12,846	10,812	63,979
	Midhawk	6,033	5,302	6,217	6,688	6,316	6,559	37,114
	Onsite	45,590	42,281	48,369	49,462	45,559	48,142	279,403
Avg. Prof RVU/Study Ratio	Deephawk	0.83	0.84	0.83	0.83	0.86	0.88	0.84
	Midhawk	0.93	0.94	0.91	0.92	0.94	0.95	0.93
	Onsite	1.07	1.09	1.08	1.08	1.08	1.08	1.08
Avg. Tech RVU/Study Ratio	Deephawk	1.75	1.77	1.75	1.75	1.88	1.86	1.79
	Midhawk	1.98	2.00	1.92	1.99	2.02	1.99	1.98
	Onsite	2.30	2.33	2.33	2.37	2.37	2.37	2.34



# Hospital Insight Report - Health System Summary

## January 2015 - June 2015



### Shift Activity

Onsite: Mon-Fri 7am - 5pm and Sat 8am - 12pm  
 Midhawk: Mon-Fri 5pm - 12am  
 Deephawk: Mon-Fri 12am - 7am and Sat 12pm - Mon 7am

#### Facility Volumes and RVUs by Shift

			Jan	Feb	Mar	Apr	May	Jun	Grand Total
Onsite	Site L	Study Count	8,376	7,328	8,576	8,841	8,057	8,662	49,840
		RVU Sum Professional Produ..	10,248	8,994	10,371	10,525	9,486	10,168	59,792
		RVU Sum Technical Fiscal	20,043	17,324	20,514	21,081	19,600	20,264	118,826
Site K	Site K	Study Count	3,323	3,162	3,566	3,548	3,352	3,601	20,552
		RVU Sum Professional Produ..	3,385	3,406	3,848	3,908	3,633	3,939	22,118
		RVU Sum Technical Fiscal	8,474	8,696	9,866	9,865	9,175	10,081	56,158
Site J	Site J	Study Count	1,857	1,798	2,186	2,143	1,868	1,995	11,847
		RVU Sum Professional Produ..	2,420	2,352	2,753	2,820	2,468	2,612	15,424
		RVU Sum Technical Fiscal	5,307	4,824	5,830	5,874	5,140	5,634	32,609
Site I	Site I	Study Count	1,698	1,532	1,708	1,738	1,623	1,649	9,948
		RVU Sum Professional Produ..	1,462	1,280	1,420	1,439	1,400	1,481	8,482
		RVU Sum Technical Fiscal	3,502	3,067	3,367	3,562	3,435	3,715	20,648
Site H	Site H	Study Count	1,325	1,243	1,412	1,293	1,333	1,290	7,896
		RVU Sum Professional Produ..	1,153	1,203	1,319	1,220	1,310	1,191	7,396
		RVU Sum Technical Fiscal	2,461	2,547	2,850	2,636	2,725	2,524	15,742
Site G	Site G	Study Count	900	871	976	1,054	1,011	1,065	5,877
		RVU Sum Professional Produ..	796	771	771	964	858	900	5,061
		RVU Sum Technical Fiscal	1,896	1,867	1,887	2,480	2,112	2,312	12,554
Site F	Site F	Study Count	880	853	853	862	724	882	5,054
		RVU Sum Professional Produ..	635	676	659	694	589	723	3,975
		RVU Sum Technical Fiscal	1,373	1,548	1,482	1,589	1,349	1,622	8,963
Site E	Site E	Study Count	510	481	508	499	476	533	3,007
		RVU Sum Professional Produ..	386	400	436	367	376	453	2,418
		RVU Sum Technical Fiscal	886	878	1,015	865	814	984	5,443
Site D	Site D	Study Count	576	548	580	543	406	310	2,963
		RVU Sum Professional Produ..	481	435	463	428	320	252	2,379
		RVU Sum Technical Fiscal	1,086	996	988	955	699	535	5,259
Site C	Site C	Study Count	290	258	299	288	270	269	1,674
		RVU Sum Professional Produ..	168	155	194	164	183	166	1,029
		RVU Sum Technical Fiscal	343	329	386	356	361	310	2,086
Site B	Site B	Study Count	76	69	68	79	60	60	412
		RVU Sum Professional Produ..	87	72	78	89	47	104	477
		RVU Sum Technical Fiscal	156	115	140	149	86	130	776
Site A	Site A	Study Count	32	38	20	21	39	29	179
		RVU Sum Professional Produ..	42	37	20	21	30	40	191
		RVU Sum Technical Fiscal	62	88	43	50	63	31	338
<b>Grand Total</b>	<b>Grand Total</b>	Study Count	19,843	18,181	20,752	20,909	19,219	20,345	119,249
		RVU Sum Professional Produ..	21,264	19,781	22,330	22,639	20,699	22,028	128,742
		RVU Sum Technical Fiscal	45,590	42,281	48,369	49,462	45,559	48,142	279,403



# Hospital Insight Report - Health System Summary

## January 2015 - June 2015



### Shift Activity

Onsite: Mon-Fri 7am - 5pm and Sat 8am - 12pm  
 Midhawk: Mon-Fri 5pm - 12am  
 Deephawk: Mon-Fri 12am - 7am and Sat 12pm - Mon 7am

#### Facility Volumes and RVUs by Shift

			Jan	Feb	Mar	Apr	May	Jun	Grand Total
Deephawk	Site L	Study Count	3,278	2,819	3,075	3,000	3,711	3,096	18,979
		RVU Sum Professional Produ..	2,973	2,591	2,871	2,757	3,475	2,915	17,583
		RVU Sum Technical Fiscal	6,666	5,845	6,476	6,184	8,144	6,492	39,807
Site K	Site K	Study Count	987	860	963	842	1,022	931	5,605
		RVU Sum Professional Produ..	676	591	649	574	779	721	3,991
		RVU Sum Technical Fiscal	1,262	1,140	1,220	1,092	1,511	1,391	7,616
Site J	Site J	Study Count	181	189	229	218	238	288	1,343
		RVU Sum Professional Produ..	142	142	150	118	184	263	999
		RVU Sum Technical Fiscal	273	272	301	235	368	534	1,983
Site I	Site I	Study Count	354	339	341	318	404	324	2,080
		RVU Sum Professional Produ..	279	283	272	255	317	285	1,691
		RVU Sum Technical Fiscal	532	524	497	492	612	549	3,206
Site H	Site H	Study Count	238	199	304	213	258	222	1,434
		RVU Sum Professional Produ..	201	170	270	171	223	197	1,231
		RVU Sum Technical Fiscal	421	344	547	343	455	386	2,497
Site G	Site G	Study Count	270	309	318	295	340	255	1,787
		RVU Sum Professional Produ..	192	251	213	238	279	221	1,394
		RVU Sum Technical Fiscal	366	491	393	476	542	441	2,708
Site F	Site F	Study Count	220	203	210	219	298	197	1,347
		RVU Sum Professional Produ..	183	177	184	179	211	187	1,121
		RVU Sum Technical Fiscal	350	324	335	340	419	330	2,098
Site E	Site E	Study Count	166	189	158	171	191	157	1,032
		RVU Sum Professional Produ..	134	132	116	126	142	120	769
		RVU Sum Technical Fiscal	263	241	228	238	269	238	1,478
Site D	Site D	Study Count	144	100	121	135	125	117	742
		RVU Sum Professional Produ..	105	79	69	90	101	76	519
		RVU Sum Technical Fiscal	198	143	116	179	187	139	962
Site C	Site C	Study Count	119	139	110	109	148	153	778
		RVU Sum Professional Produ..	65	103	78	73	111	116	545
		RVU Sum Technical Fiscal	118	195	141	132	200	208	992
Site B	Site B	Study Count	44	40	45	46	36	27	238
		RVU Sum Professional Produ..	19	18	19	25	22	11	115
		RVU Sum Technical Fiscal	40	35	34	45	44	19	216
Site A	Site A	Study Count	39	38	52	29	65	51	274
		RVU Sum Professional Produ..	24	23	31	17	39	34	168
		RVU Sum Technical Fiscal	56	66	70	42	96	84	415
<b>Grand Total</b>	<b>Grand Total</b>	Study Count	6,040	5,424	5,926	5,595	6,836	5,818	35,639
		RVU Sum Professional Produ..	4,994	4,561	4,922	4,622	5,881	5,146	30,126
		RVU Sum Technical Fiscal	10,546	9,621	10,357	9,797	12,846	10,812	63,979



# Hospital Insight Report - Health System Summary

## January 2015 - June 2015



### Shift Activity

Onsite: Mon-Fri 7am - 5pm and Sat 8am - 12pm  
 Midhawk: Mon-Fri 5pm - 12am  
 Deephawk: Mon-Fri 12am - 7am and Sat 12pm - Mon 7am

#### Facility Volumes and RVUs by Shift

			Jan	Feb	Mar	Apr	May	Jun	Grand Total
Midhawk	Site L	Study Count	1,361	1,194	1,509	1,511	1,430	1,492	8,497
		RVU Sum Professional Produ..	1,488	1,312	1,584	1,642	1,532	1,605	9,164
		RVU Sum Technical Fiscal	3,404	2,999	3,516	3,766	3,463	3,545	20,692
Site K	Site K	Study Count	516	383	517	483	433	575	2,907
		RVU Sum Professional Produ..	413	316	376	391	385	498	2,379
		RVU Sum Technical Fiscal	797	588	713	769	826	988	4,680
Site J	Site J	Study Count	159	140	146	157	185	188	975
		RVU Sum Professional Produ..	107	98	111	78	128	160	682
		RVU Sum Technical Fiscal	211	196	230	156	263	323	1,378
Site I	Site I	Study Count	248	204	250	274	249	232	1,457
		RVU Sum Professional Produ..	203	175	215	237	213	198	1,240
		RVU Sum Technical Fiscal	399	333	424	472	427	381	2,437
Site H	Site H	Study Count	143	142	175	190	159	159	968
		RVU Sum Professional Produ..	144	147	192	191	161	161	995
		RVU Sum Technical Fiscal	300	298	403	392	318	338	2,049
Site G	Site G	Study Count	155	151	167	191	186	170	1,020
		RVU Sum Professional Produ..	123	109	131	151	158	127	799
		RVU Sum Technical Fiscal	239	213	242	343	313	255	1,605
Site F	Site F	Study Count	152	145	182	222	191	165	1,057
		RVU Sum Professional Produ..	109	113	130	152	150	139	793
		RVU Sum Technical Fiscal	211	214	245	289	287	254	1,500
Site E	Site E	Study Count	135	111	139	114	110	111	720
		RVU Sum Professional Produ..	108	92	105	96	97	97	595
		RVU Sum Technical Fiscal	208	180	221	191	199	185	1,184
Site D	Site D	Study Count	85	97	78	82	68	109	519
		RVU Sum Professional Produ..	71	80	53	50	48	81	383
		RVU Sum Technical Fiscal	144	154	96	97	93	163	747
Site C	Site C	Study Count	77	67	72	127	90	80	513
		RVU Sum Professional Produ..	48	38	47	95	52	54	334
		RVU Sum Technical Fiscal	87	69	91	177	103	98	626
Site B	Site B	Study Count	11	17	10	15	19	12	84
		RVU Sum Professional Produ..	12	22	11	29	13	14	102
		RVU Sum Technical Fiscal	32	54	37	36	24	29	211
Site A	Site A	Study Count	1	2			1		4
		RVU Sum Professional Produ..	0	1			0		2
		RVU Sum Technical Fiscal	0	3			0		4
<b>Grand Total</b>	<b>Grand Total</b>	Study Count	3,043	2,653	3,245	3,366	3,121	3,293	18,721
		RVU Sum Professional Produ..	2,827	2,502	2,955	3,111	2,938	3,136	17,468
		RVU Sum Technical Fiscal	6,033	5,302	6,217	6,688	6,316	6,559	37,114

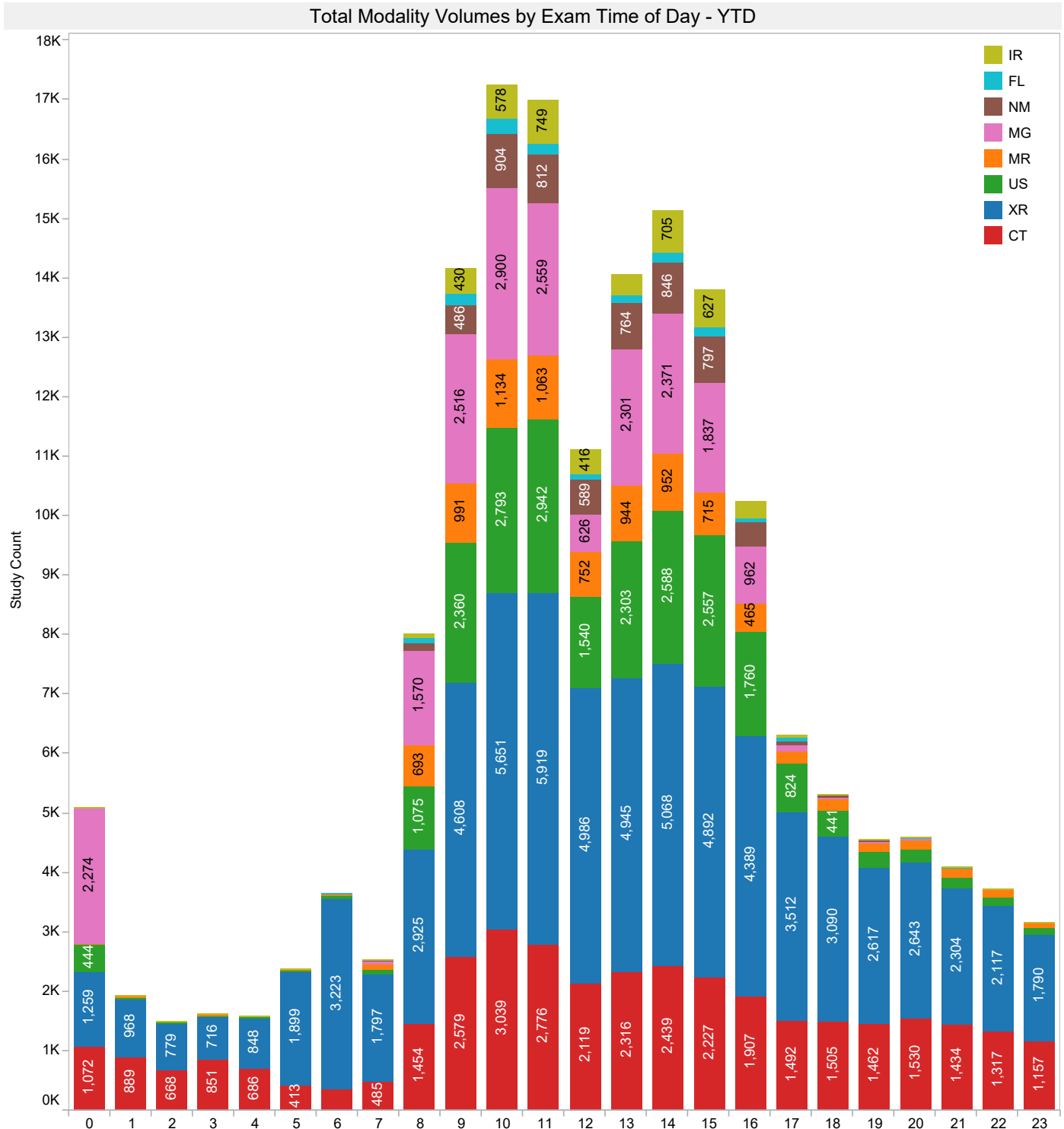


# Hospital Insight Report - Health System Summary

January 2015 - June 2015



## Scanning Activity





# Hospital Insight Report - Health System Summary

January 2015 - June 2015



## Patient Class Information

		Patient Class Mix by Facility						
		Jan	Feb	Mar	Apr	May	Jun	Grand Total
Emergency	Site D	391	328	353	399	361	351	2,183
	Site C	326	324	327	369	370	353	2,069
	Site L	3,771	3,367	3,948	3,990	4,377	3,919	23,372
	Site J	670	618	665	680	720	829	4,182
	Site G	725	736	780	790	854	742	4,627
	Site I	937	859	909	963	970	965	5,603
	Site K	1,915	1,745	1,990	1,891	2,009	2,139	11,689
	Site F	617	620	637	661	644	628	3,807
	Site E	550	490	477	462	516	503	2,998
	Site H	607	540	682	660	682	597	3,768
	<b>Total</b>	<b>10,509</b>	<b>9,627</b>	<b>10,768</b>	<b>10,865</b>	<b>11,503</b>	<b>11,026</b>	<b>64,298</b>
Inpatient	Site D	41	71	90	38	23	30	293
	Site C	19	24	13	17	12	21	106
	Site L	3,883	3,237	3,695	3,549	3,705	3,611	21,680
	Site B	131	126	122	140	115	99	733
	Site J	85	63	100	93	83	70	494
	Site G	94	106	123	136	123	120	702
	Site A	72	78	72	50	105	80	457
	Site I	252	189	161	180	162	145	1,089
	Site K	881	595	755	649	630	710	4,220
	Site F	51	53	55	37	46	48	290
	Site E	18	32	29	36	14	14	143
	Site H	115	118	125	83	79	117	637
	<b>Total</b>	<b>5,642</b>	<b>4,692</b>	<b>5,340</b>	<b>5,008</b>	<b>5,097</b>	<b>5,065</b>	<b>30,844</b>
Outpatient	Site D	368	341	333	322	212	142	1,718
	Site C	141	116	141	137	126	128	789
	Site L	5,093	4,452	5,218	5,483	4,835	5,432	30,513
	Site J	1,205	1,173	1,515	1,451	1,217	1,315	7,876
	Site G	506	486	551	587	550	622	3,302
	Site I	1,091	1,005	1,180	1,146	1,097	1,064	6,583
	Site K	1,766	1,832	2,062	2,087	1,887	2,010	11,644
	Site F	577	520	546	602	518	560	3,323
	Site E	222	247	286	274	242	278	1,549
	Site H	958	906	1,075	922	973	828	5,662
		<b>Total</b>	<b>11,927</b>	<b>11,078</b>	<b>12,907</b>	<b>13,011</b>	<b>11,657</b>	<b>12,379</b>
-	Site D	5	5	3	1	3	13	30
	Site C				1			1
	Site L	268	285	299	330	281	289	1,752
	Site B			1				1
	Site J	237	273	281	294	271	257	1,613
	Site G		3	7	27	10	6	53
	Site I	20	22	49	41	47	31	210
	Site K	264	233	239	246	281	249	1,512
	Site F	7	8	7	3	5	8	38
	Site E	21	12	13	12	5	6	69
	Site H	26	20	9	31	16	129	231
	<b>Total</b>	<b>848</b>	<b>861</b>	<b>908</b>	<b>986</b>	<b>919</b>	<b>988</b>	<b>5,510</b>
<b>Grand Total</b>		<b>28,926</b>	<b>26,258</b>	<b>29,923</b>	<b>29,870</b>	<b>29,176</b>	<b>29,458</b>	<b>173,611</b>



# Hospital Insight Report - Health System Summary

January 2015 - June 2015



## Radiologist Productivity

		Radiologist Productivity						Grand Total	% Change Current Month from Previous Month
		Jan	Feb	Mar	Apr	May	Jun		
Radiologist A	Study Count	1,548	791	990	1,021	988	1,070	6,408	8.30%
	RVU Sum Professional Produ..	1,172	739	1,041	1,187	1,081	1,146	6,367	6.01%
	Prof RVU/Study Ratio	0.76	0.93	1.05	1.16	1.09	1.07	6.07	-2.11%
Radiologist B	Study Count	2,716	2,444	2,768	2,176	2,259	3,095	15,458	37.01%
	RVU Sum Professional Produ..	1,845	1,662	1,888	1,493	1,534	2,077	10,499	35.35%
	Prof RVU/Study Ratio	0.68	0.68	0.68	0.69	0.68	0.67	4.08	-1.21%
Radiologist C	Study Count	1,618	179	894	245	345	600	3,881	73.91%
	RVU Sum Professional Produ..	1,663	173	835	220	382	551	3,824	44.27%
	Prof RVU/Study Ratio	1.03	0.97	0.93	0.90	1.11	0.92	5.85	-17.05%
Radiologist D	Study Count		1	66	421	37	94	619	154.05%
	RVU Sum Professional Produ..		0	39	270	29	60	398	105.62%
	Prof RVU/Study Ratio		0.26	0.59	0.64	0.78	0.63	2.91	-19.06%
Radiologist E	Study Count	112	910	838	1,058	1,316	36	4,270	-97.26%
	RVU Sum Professional Produ..	85	783	658	852	1,108	36	3,522	-96.77%
	Prof RVU/Study Ratio	0.76	0.86	0.79	0.81	0.84	0.99	5.04	17.99%
Radiologist F	Study Count	1,227	660	537	506	371	890	4,191	139.89%
	RVU Sum Professional Produ..	1,105	494	496	465	319	822	3,701	158.19%
	Prof RVU/Study Ratio	0.90	0.75	0.92	0.92	0.86	0.92	5.27	7.63%
Radiologist G	Study Count	1,776	1,646	2,129	1,609	1,559	1,427	10,146	-8.47%
	RVU Sum Professional Produ..	1,392	1,340	1,515	1,298	1,292	1,108	7,945	-14.21%
	Prof RVU/Study Ratio	0.78	0.81	0.71	0.81	0.83	0.78	4.72	-6.27%
Radiologist H	Study Count	19	10	12	14	5	11	71	120.00%
	RVU Sum Professional Produ..	41	28	20	41	12	23	166	98.73%
	Prof RVU/Study Ratio	2.16	2.83	1.68	2.92	2.36	2.13	14.08	-9.67%
Radiologist I	Study Count	107	74	85	133	87	125	611	43.68%
	RVU Sum Professional Produ..	194	141	156	250	161	225	1,128	40.13%
	Prof RVU/Study Ratio	1.81	1.91	1.84	1.88	1.85	1.80	11.09	-2.47%
Radiologist J	Study Count	236	250	343	295	30		1,154	-100.00%
	RVU Sum Professional Produ..	575	656	887	788	71		2,977	-100.00%
	Prof RVU/Study Ratio	2.44	2.63	2.58	2.67	2.38		12.69	-100.00%
Radiologist K	Study Count	520	997	543	2,031	1,966	1,790	7,847	-8.95%
	RVU Sum Professional Produ..	499	1,028	589	2,040	1,991	1,728	7,874	-13.22%
	Prof RVU/Study Ratio	0.96	1.03	1.08	1.00	1.01	0.97	6.06	-4.69%
Radiologist L	Study Count	53	39	69	65	22	47	295	113.64%
	RVU Sum Professional Produ..	148	121	201	180	63	132	846	107.78%
	Prof RVU/Study Ratio	2.80	3.11	2.92	2.77	2.88	2.80	17.28	-2.74%
Radiologist M	Study Count	609	535	1,707	961	513	316	4,641	-38.40%
	RVU Sum Professional Produ..	603	496	1,773	911	447	278	4,507	-37.76%
	Prof RVU/Study Ratio	0.99	0.93	1.04	0.95	0.87	0.88	5.65	1.04%





# Hospital Insight Report - Health System Summary

## January 2015 - June 2015



### Radiologist Productivity

		Radiologist Productivity						Grand Total	% Change Current Month from Previous Month
		Jan	Feb	Mar	Apr	May	Jun		
Radiologist N	Study Count	232	214	265	271	252	238	1,472	-5.56%
	RVU Sum Professional Produ..	452	405	512	523	478	437	2,808	-8.57%
	Prof RVU/Study Ratio	1.95	1.89	1.93	1.93	1.90	1.84	11.44	-3.19%
Radiologist O	Study Count	12	12	18	17	12	9	80	-25.00%
	RVU Sum Professional Produ..	25	21	29	29	20	19	143	-2.75%
	Prof RVU/Study Ratio	2.07	1.73	1.61	1.68	1.67	2.16	10.92	29.67%
Radiologist P	Study Count	1,193	828	778	67	527	1,060	4,453	101.14%
	RVU Sum Professional Produ..	975	642	601	45	393	845	3,502	115.40%
	Prof RVU/Study Ratio	0.82	0.78	0.77	0.68	0.74	0.80	4.59	7.09%
Radiologist Q	Study Count	31	16	18	38	24	33	160	37.50%
	RVU Sum Professional Produ..	68	39	35	91	52	78	364	51.07%
	Prof RVU/Study Ratio	2.19	2.47	1.96	2.40	2.16	2.37	13.54	9.87%
Radiologist R	Study Count	231	216	225	231	11	16	930	45.45%
	RVU Sum Professional Produ..	169	167	161	162	10	7	677	-24.00%
	Prof RVU/Study Ratio	0.73	0.77	0.72	0.70	0.89	0.47	4.28	-47.75%
Radiologist S	Study Count	93	475	1,012	1,576	1,359	1,056	5,571	-22.30%
	RVU Sum Professional Produ..	111	525	1,028	1,619	1,329	835	5,446	-37.18%
	Prof RVU/Study Ratio	1.19	1.10	1.02	1.03	0.98	0.79	6.11	-19.16%
Radiologist T	Study Count	203	156	187	195	206	211	1,158	2.43%
	RVU Sum Professional Produ..	384	312	349	362	378	401	2,185	6.02%
	Prof RVU/Study Ratio	1.89	2.00	1.86	1.86	1.84	1.90	11.35	3.51%
Radiologist U	Study Count	37	33	42	33	36	25	206	-30.56%
	RVU Sum Professional Produ..	76	66	88	68	75	50	422	-33.75%
	Prof RVU/Study Ratio	2.04	2.00	2.10	2.06	2.08	1.98	12.26	-4.60%
Radiologist V	Study Count	302	98	338	1,053	713	246	2,750	-65.50%
	RVU Sum Professional Produ..	166	53	185	621	453	175	1,653	-61.30%
	Prof RVU/Study Ratio	0.55	0.55	0.55	0.59	0.63	0.71	3.58	12.15%
Radiologist W	Study Count	169	161	168	250	140	185	1,073	32.14%
	RVU Sum Professional Produ..	317	314	313	491	268	343	2,047	27.83%
	Prof RVU/Study Ratio	1.88	1.95	1.86	1.97	1.92	1.85	11.43	-3.27%
Radiologist X	Study Count	1,270	983	931	774	593	2,078	6,629	250.42%
	RVU Sum Professional Produ..	1,455	998	908	723	364	1,911	6,359	424.81%
	Prof RVU/Study Ratio	1.15	1.01	0.98	0.93	0.61	0.92	5.60	49.77%
Radiologist Y	Study Count	340	373	597	143	193	12	1,658	-93.78%
	RVU Sum Professional Produ..	246	257	410	105	132	7	1,155	-94.93%
	Prof RVU/Study Ratio	0.72	0.69	0.69	0.74	0.68	0.56	4.07	-18.46%
Radiologist Z	Study Count	149	184	201	211	156	190	1,091	21.79%
	RVU Sum Professional Produ..	300	375	417	436	315	368	2,212	16.53%
	Prof RVU/Study Ratio	2.02	2.04	2.08	2.07	2.02	1.93	12.16	-4.32%



# Hospital Insight Report - Health System Summary

## January 2015 - June 2015



### Referring Physician Productivity

Top Referring Physicians							
	Jan	Feb	Mar	Apr	May	Jun	Grand Total
Referring Physician A	430	329	347	453	385	447	2,391
Referring Physician B	363	315	503	332	386	381	2,280
Referring Physician C	426	308	323	384	349	368	2,158
Referring Physician D	327	273	396	328	396	351	2,071
Referring Physician E	285	236	237	420	357	436	1,971
Referring Physician F	301	305	330	271	357	378	1,942
Referring Physician G	334	235	342	348	373	303	1,935
Referring Physician H	337	266	298	342	362	259	1,864
Referring Physician I	300	245	341	271	338	359	1,854
Referring Physician J	251	227	322	335	412	302	1,849
Referring Physician K	295	296	335	295	296	309	1,826
Referring Physician L	269	212	308	350	284	310	1,733
Referring Physician M	305	294	258	233	274	335	1,699
Referring Physician N	307	220	281	193	271	360	1,632
Referring Physician O	256	257	357	302	183	220	1,575
Referring Physician P	217	215	298	239	206	221	1,396
Referring Physician Q	230	254	241	199	237	234	1,395
Referring Physician R	183	198	183	265	257	269	1,355
Referring Physician S	216	127	247	215	242	233	1,280
Referring Physician T	204	212	254	203	202	151	1,226
Referring Physician U	273	244	263	233	102	12	1,127
Referring Physician V	164	188	198	202	174	194	1,120
Referring Physician W	188	160	225	149	173	200	1,095
Referring Physician X	166	154	177	199	198	187	1,081
Referring Physician Y	169	184	167	176	164	190	1,050
Referring Physician Z	161	144	185	213	153	181	1,037



## Enabling better decisions for the health of patients and the practice of radiology

### FAQs About Your Hospital Insight Report:

**Q: What timestamp is used within the Hospital Insight Report?**

**A:** The HI Report uses the "Exam Time" which is the time the picture was taken at the modality, in the client's specific time zone. For example, a study that was taken on November 30th at 11:30 pm (local time zone) will be represented as study volume for the month of November within the report.

**Q: Why might the study count in the Hospital Insight Report differ from the study count on the invoice?**

**A:** The HI Report utilizes "Exam Time" (the time the picture was taken at the modality) while the vRad invoice uses "Distributed Time" (the time the report was distributed to the facility). In addition, calculations are used to determine costs associated with certain types of studies (such as CT Abdomen/Pelvis) on the invoice. Therefore, study volumes may vary.

**Q: What does the percent change represent in the Hospital Insight Report?**

**A:** The HI Report calculates the percent change by comparing the previous month's counts to the most recent month's counts and displays the percent difference under the Change column in various pages of the report.

**For more information or to talk to an expert advisor at vRad:  
Call 800.737.0610**

#### vRad Snapshot

**vRad is a global telemedicine company and the nation's leading radiology practice.**

- Founded 2001, an affiliate of MEDNAX (NYSE: MD)
- 350+ U.S. board-certified and eligible radiologists, 75% subspecialty trained
- 2,100+ hospital, health system and radiology group facilities served
- Over 14,000 daily reads – totaling 5 million+ annual studies
- U.S.-based, 24/7 operations and technical support center
- Largest PACS implementation worldwide – moving over 1.3 billion radiology images annually
- The largest – and only – radiology patient care benchmarking platform (vRad RPC Index): 30 million+ studies, growing at 400,000 per month
- 15 issued patents highlighting innovation in telemedicine workflow; additional patents pending on data normalization, efficiency in workflow coordination, and deep learning applications within telemedicine.
- Frost & Sullivan Visionary Innovation Award Winner: Medical Imaging Analytics - North America